

## ISM2 Antibody

Catalog No: #40246

Orders: [order@signalwayantibody.com](mailto:order@signalwayantibody.com)Support: [tech@signalwayantibody.com](mailto:tech@signalwayantibody.com)

## Description

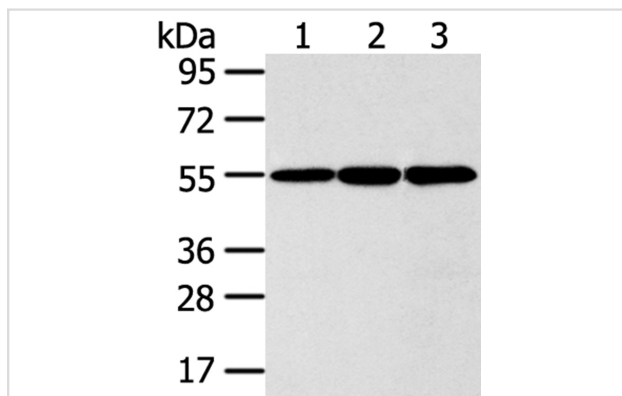
Product Name	ISM2 Antibody
Host Species	Rabbit
Clonality	Polyclonal
Purification	Antigen affinity purification.
Applications	WB IHC
Species Reactivity	Hu
Specificity	The antibody detects endogenous levels of total ISM2 protein.
Immunogen Type	Peptide
Immunogen Description	Synthetic peptide corresponding to residues near the C terminal of human isthmin 2
Target Name	ISM2
Other Names	TAIL1; THSD3
Accession No.	Swiss-Prot:Q6H9L7Gene Accssion:NP_954993
Uniprot	Q6H9L7
GeneID	145501;
SDS-PAGE MW	64KD
Concentration	3mg/ml
Formulation	Rabbit IgG in pH7.4 PBS, 0.05% NaN <sub>3</sub> , 40% Glycerol.
Storage	Store at -20°C

## Application Details

Western blotting: 1:1000-1:5000

Immunohistochemistry:1:30-1:150

## Images



Gel: 8%SDS-PAGE

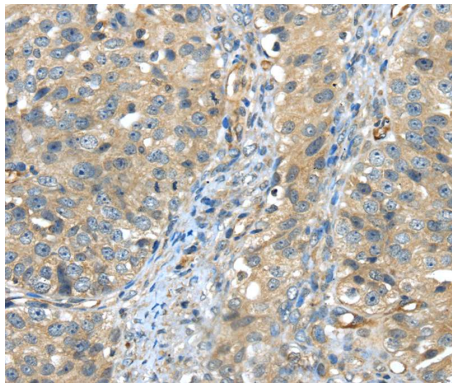
Lysates (from left to right): 293T, lo2 and lovo cell

Amount of lysate: 40ug per lane

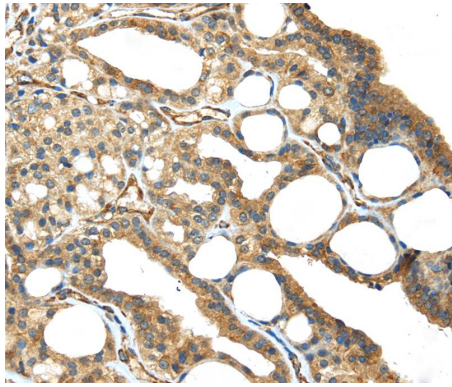
Primary antibody: 1/300 dilution

Secondary antibody dilution: 1/8000

Exposure time: 5 seconds



Immunohistochemical analysis of paraffin-embedded Human breast cancer tissue using #40246 at dilution 1/45.



Immunohistochemical analysis of paraffin-embedded Human thyroid cancer tissue using #40246 at dilution 1/45.

## Background

The protein encoded by this gene contains a type 1 thrombospondin domain, which is present in thrombospondin, a number of proteins involved in the complement pathway, as well as in extracellular matrix proteins. Two alternatively spliced transcript variants encoding distinct isoforms have been observed.?

Note: This product is for in vitro research use only