

NME2 Antibody

Catalog No: #40247

Orders: order@signalwayantibody.com

Support: tech@signalwayantibody.com

Description

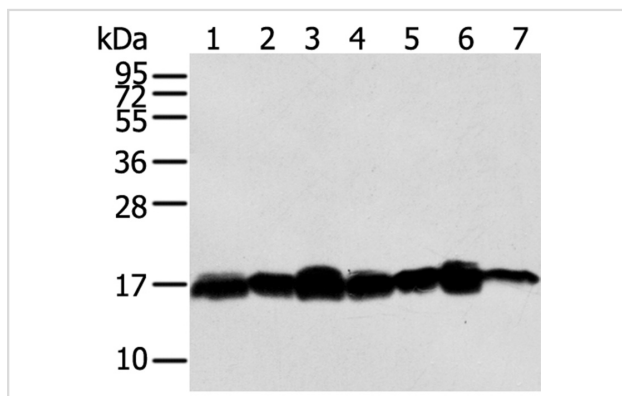
| | |
|-----------------------|---|
| Product Name | NME2 Antibody |
| Host Species | Rabbit |
| Clonality | Polyclonal |
| Purification | Antigen affinity purification. |
| Applications | WB IHC |
| Species Reactivity | Hu Ms |
| Specificity | The antibody detects endogenous levels of total NME2 protein. |
| Immunogen Type | Peptide |
| Immunogen Description | Synthetic peptide corresponding to residues near the C terminal of human NME/NM23 nucleoside diphosphate kinase 2 |
| Target Name | NME2 |
| Other Names | PUF; NDKB; NDPKB; NM23B; NDPK-B; NM23-H2 |
| Accession No. | Swiss-Prot:P22392Gene Accssion:NP_002503 |
| Uniprot | P22392 |
| GeneID | 4831;654364; |
| SDS-PAGE MW | 17KD |
| Concentration | 2.8mg/ml |
| Formulation | Rabbit IgG in pH7.4 PBS, 0.05% NaN ₃ , 40% Glycerol. |
| Storage | Store at -20°C |

Application Details

Western blotting: 1:1000-1:5000

Immunohistochemistry:1:30-1:150

Images



Gel: 12%SDS-PAGE

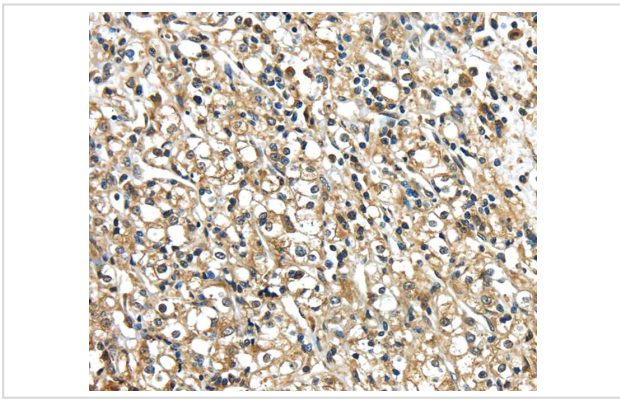
Lysates (from left to right): HeLa, NIH/3T3, Incap and 293T cell, mouse brain tissue, A549 and Jurkat cell

Amount of lysate: 40ug per lane

Primary antibody: 1/300 dilution

Secondary antibody dilution: 1/8000

Exposure time: 30 seconds



Immunohistochemical analysis of paraffin-embedded Human prostate cancer tissue using #40247 at dilution 1/40.

Background

Nucleoside diphosphate kinase (NDK) exists as a hexamer composed of 'A' (encoded by NME1) and 'B' (encoded by this gene) isoforms. Multiple alternatively spliced transcript variants have been found for this gene. Read-through transcription from the neighboring upstream gene (NME1) generates naturally-occurring transcripts (NME1-NME2) that encode a fusion protein comprised of sequence sharing identity with each individual gene product.?

Note: This product is for in vitro research use only