

ZFP36L2 Antibody

Catalog No: #40250

Orders: order@signalwayantibody.com

Support: tech@signalwayantibody.com

Description

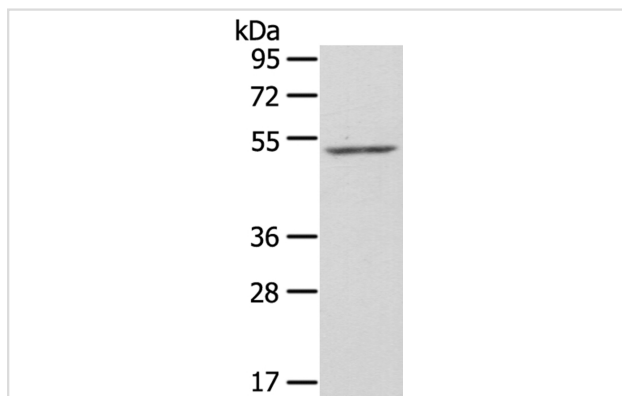
Product Name	ZFP36L2 Antibody
Host Species	Rabbit
Clonality	Polyclonal
Purification	Antigen affinity purification.
Applications	WB IHC
Species Reactivity	Hu Ms
Specificity	The antibody detects endogenous levels of total ZFP36L2 protein.
Immunogen Type	Peptide
Immunogen Description	Synthetic peptide corresponding to residues near the C terminal of human ZFP36 ring finger protein-like 2
Target Name	ZFP36L2
Other Names	BRF2; ERF2; ERF-2; TIS11D; RNF162C
Accession No.	Swiss-Prot:P47974Gene Accssion:NP_008818
Uniprot	P47974
GeneID	678;
SDS-PAGE MW	51KD
Concentration	2.6mg/ml
Formulation	Rabbit IgG in pH7.4 PBS, 0.05% NaN ₃ , 40% Glycerol.
Storage	Store at -20°C

Application Details

Western blotting: 1:200-1:1000

Immunohistochemistry:1:25-1:100

Images

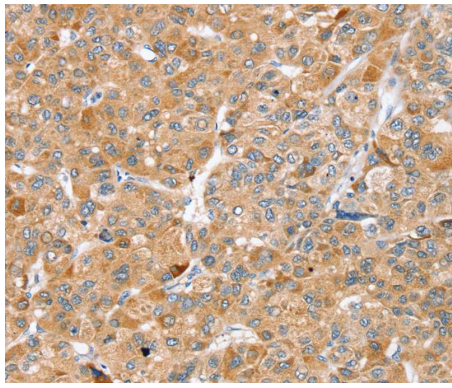


Gel: 8%SDS-PAGE

Lysate: 40ug NIH/3T3 cellPrimary antibody: 1/550 dilution

Secondary antibody dilution: 1/8000

Exposure time: 30 seconds



Immunohistochemical analysis of paraffin-embedded Human liver cancer tissue using #40250 at dilution 1/45.

Background

This gene is a member of the TIS11 family of early response genes. Family members are induced by various agonists such as the phorbol ester TPA and the polypeptide mitogen EGF. The encoded protein contains a distinguishing putative zinc finger domain with a repeating cys-his motif. This putative nuclear transcription factor most likely functions in regulating the response to growth factors.?

Note: This product is for in vitro research use only