

## TPD52L2 Antibody

Catalog No: #40260

Orders: [order@signalwayantibody.com](mailto:order@signalwayantibody.com)Support: [tech@signalwayantibody.com](mailto:tech@signalwayantibody.com)

## Description

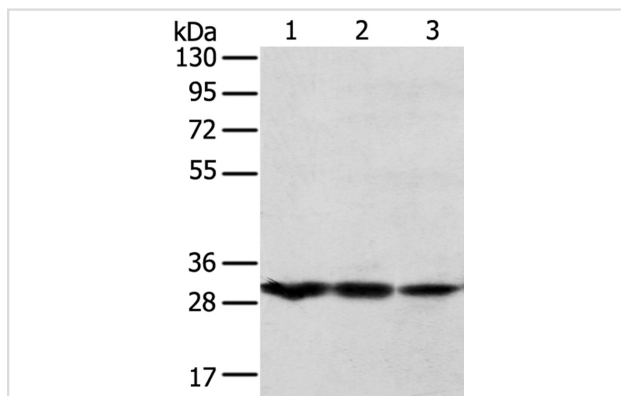
Product Name	TPD52L2 Antibody
Host Species	Rabbit
Clonality	Polyclonal
Purification	Antigen affinity purification.
Applications	WB IHC
Species Reactivity	Hu Ms
Specificity	The antibody detects endogenous levels of total TPD52L2 protein.
Immunogen Type	Peptide
Immunogen Description	Synthetic peptide corresponding to residues near the C terminal of human tumor protein D52-like 2
Target Name	TPD52L2
Other Names	D54; TPD54
Accession No.	Swiss-Prot:O43399Gene Accssion:NP_003279
Uniprot	O43399
GeneID	7165;
SDS-PAGE MW	22KD
Concentration	1.1mg/ml
Formulation	Rabbit IgG in pH7.4 PBS, 0.05% NaN <sub>3</sub> , 40% Glycerol.
Storage	Store at -20°C

## Application Details

Western blotting: 1:500-1:2000

Immunohistochemistry:1:25-1:100

## Images



Gel: 8%SDS-PAGE

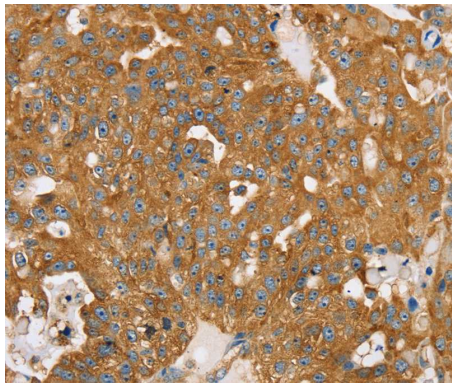
Lysates (from left to right): Mouse bladder tissue, K562 and MCF7 cell

Amount of lysate: 40ug per lane

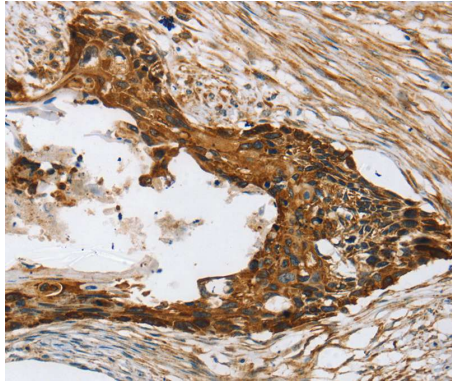
Primary antibody: 1/250 dilution

Secondary antibody dilution: 1/8000

Exposure time: 1 minute



Immunohistochemical analysis of paraffin-embedded Human breast cancer tissue using #40260 at dilution 1/20.



Immunohistochemical analysis of paraffin-embedded Human esophagus cancer tissue using #40260 at dilution 1/20.

## Background

This gene encodes a member of the tumor protein D52-like family. These proteins are characterized by an N-terminal coiled-coil motif that is used to form homo- and heteromeric complexes with other tumor protein D52-like proteins. Expression of this gene may be a marker for breast cancer and acute lymphoblastic leukemia. Alternatively spliced transcript variants encoding multiple isoforms have been observed for this gene, and a pseudogene of this gene is located on the long arm of chromosome 12.?

Note: This product is for in vitro research use only