

MED15 Antibody

Catalog No: #40263

Orders: order@signalwayantibody.comSupport: tech@signalwayantibody.com

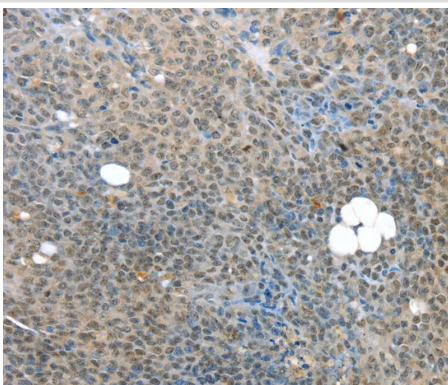
Description

Product Name	MED15 Antibody
Host Species	Rabbit
Clonality	Polyclonal
Purification	Antigen affinity purification.
Applications	IHC
Species Reactivity	Hu
Specificity	The antibody detects endogenous levels of total MED15 protein.
Immunogen Type	Peptide
Immunogen Description	Synthetic peptide corresponding to a region derived from internal residues of human mediator complex subunit 15
Target Name	MED15
Other Names	TIG1; CAG7A; CTG7A; PCQAP; TIG-1; TNRC7; ARC105
Accession No.	Swiss-Prot:Q96RN5Gene Accssion:NP_001003891
Uniprot	Q96RN5
GeneID	51586;
Concentration	1.6mg/ml
Formulation	Rabbit IgG in pH7.4 PBS, 0.05% NaN ₃ , 40% Glycerol.
Storage	Store at -20°C

Application Details

Immunohistochemistry:1:25-1:100

Images



Immunohistochemical analysis of paraffin-embedded Human ovarian cancer tissue using #40263 at dilution 1/25.

Background

The protein encoded by this gene is a subunit of the multiprotein complexes PC2 and ARC/DRIP and may function as a transcriptional coactivator in RNA polymerase II transcription. This gene contains stretches of trinucleotide repeats and is located in the chromosome 22 region which is deleted in

DiGeorge syndrome. Alternative splicing results in multiple transcript variants.

Note: This product is for in vitro research use only