

TRPM6 Antibody

Catalog No: #40267

Orders: order@signalwayantibody.com

Support: tech@signalwayantibody.com

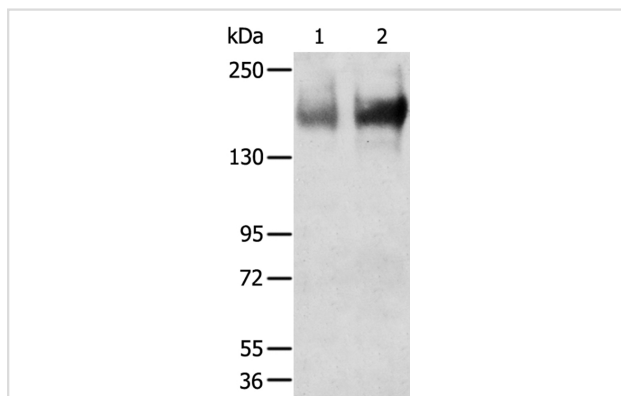
Description

Product Name	TRPM6 Antibody
Host Species	Rabbit
Clonality	Polyclonal
Purification	Antigen affinity purification.
Applications	WB
Species Reactivity	Hu
Specificity	The antibody detects endogenous levels of total TRPM6 protein.
Immunogen Type	Peptide
Immunogen Description	Synthetic peptide corresponding to residues near the C terminal of human transient receptor potential cation channel, subfamily M, member 6
Target Name	TRPM6
Other Names	HSH; HMGX; HOMG; CHAK2; HOMG1
Accession No.	Swiss-Prot:Q9BX84Gene Accssion:NP_060132
Uniprot	Q9BX84
GeneID	140803;
SDS-PAGE MW	232KD
Concentration	1.5mg/ml
Formulation	Rabbit IgG in pH7.4 PBS, 0.05% NaN ₃ , 40% Glycerol.
Storage	Store at -20°C

Application Details

Western blotting: 1:200-1:1000

Images



Gel: 6%SDS-PAGE

Lysates (from left to right): Human jejunioileum and ileum tissue

Amount of lysate: 40ug per lane

Primary antibody: 1/200 dilution

Secondary antibody dilution: 1/8000

Exposure time: 5 minutes

Background

This gene is predominantly expressed in the kidney and colon, and encodes a protein containing an ion channel domain and a protein kinase domain.

It is crucial for magnesium homeostasis, and plays an essential role in epithelial magnesium transport and in the active magnesium absorption in the gut and kidney. Mutations in this gene are associated with hypomagnesemia with secondary hypocalcemia. Alternatively spliced transcript variants encoding different isoforms have been noted for this gene.

Note: This product is for in vitro research use only