

## TSPY1 Antibody

Catalog No: #40270

Orders: [order@signalwayantibody.com](mailto:order@signalwayantibody.com)Support: [tech@signalwayantibody.com](mailto:tech@signalwayantibody.com)

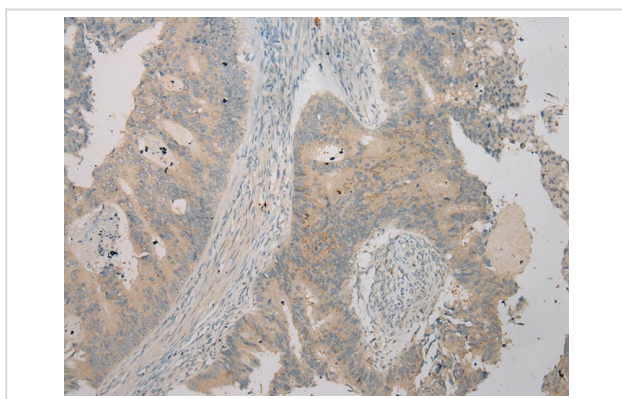
## Description

Product Name	TSPY1 Antibody
Host Species	Rabbit
Clonality	Polyclonal
Purification	Antigen affinity purification.
Applications	IHC
Species Reactivity	Hu
Specificity	The antibody detects endogenous levels of total TSPY1 protein.
Immunogen Type	Peptide
Immunogen Description	Synthetic peptide corresponding to residues near the C terminal of human testis specific protein, Y-linked 1
Target Name	TSPY1
Other Names	CT78; TSPY; DYS14; pJA923
Accession No.	Swiss-Prot:Q540R4Gene Accssion:NP_001184171
Uniprot	Q540R4
Concentration	2.8mg/ml
Formulation	Rabbit IgG in pH7.4 PBS, 0.05% NaN <sub>3</sub> , 40% Glycerol.
Storage	Store at -20°C

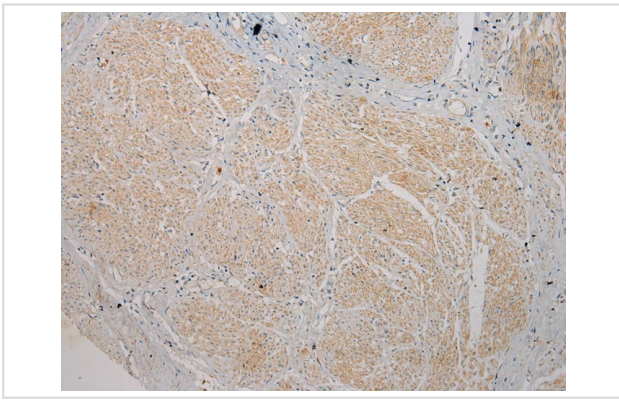
## Application Details

Immunohistochemistry: 1:100-1:200

## Images



Immunohistochemical analysis of paraffin-embedded Human Colorectal cancer tissue using #40270 at dilution 1/100.



Immunohistochemical analysis of paraffin-embedded Human Prostate cancer tissue using #40270 at dilution 1/100.

## Background

The protein encoded by this gene is found only in testicular tissue and may be involved in spermatogenesis. Approximately 35 copies of this gene are present in humans, but only a single, nonfunctional orthologous gene is found in mouse. Two transcript variants encoding different isoforms have been found for this gene.?

Note: This product is for in vitro research use only