

TUSC1 Antibody

Catalog No: #40272

Orders: order@signalwayantibody.comSupport: tech@signalwayantibody.com

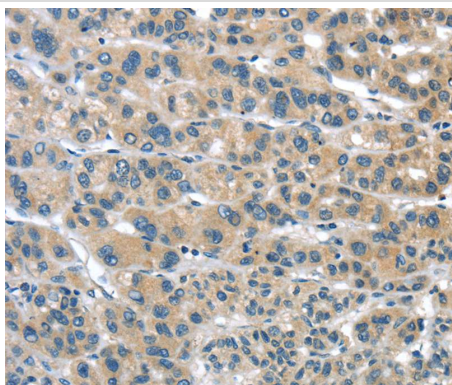
Description

Product Name	TUSC1 Antibody
Host Species	Rabbit
Clonality	Polyclonal
Purification	Antigen affinity purification.
Applications	IHC
Species Reactivity	Hu
Specificity	The antibody detects endogenous levels of total TUSC1 protein.
Immunogen Type	Peptide
Immunogen Description	Synthetic peptide corresponding to residues near the C terminal of human tumor suppressor candidate 1
Target Name	TUSC1
Other Names	TSG9; TSG-9
Accession No.	Swiss-Prot:Q2TAM9 Gene Accssion:NP_001004125
Uniprot	Q2TAM9
GeneID	286319;
Concentration	2mg/ml
Formulation	Rabbit IgG in pH7.4 PBS, 0.05% NaN ₃ , 40% Glycerol.
Storage	Store at -20°C

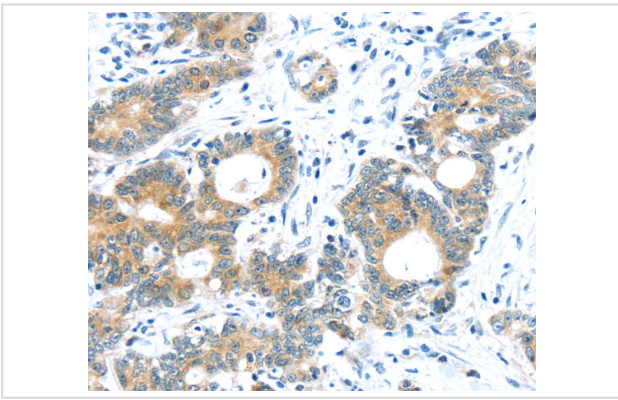
Application Details

Immunohistochemistry:1:25-1:100

Images



Immunohistochemical analysis of paraffin-embedded Human liver cancer tissue using #40272 at dilution 1/30.



Immunohistochemical analysis of paraffin-embedded Human colorectal cancer tissue using #40272 at dilution 1/30.

Background

This gene is located within the region of chromosome 9p that harbors tumor suppressor genes critical in carcinogenesis. It is an intronless gene which is downregulated in non-small-cell lung cancer and small-cell lung cancer cell lines, suggesting that it may play a role in lung tumorigenesis.?

Note: This product is for in vitro research use only