

UBA1 Antibody

Catalog No: #40277

Orders: order@signalwayantibody.com

Support: tech@signalwayantibody.com

Description

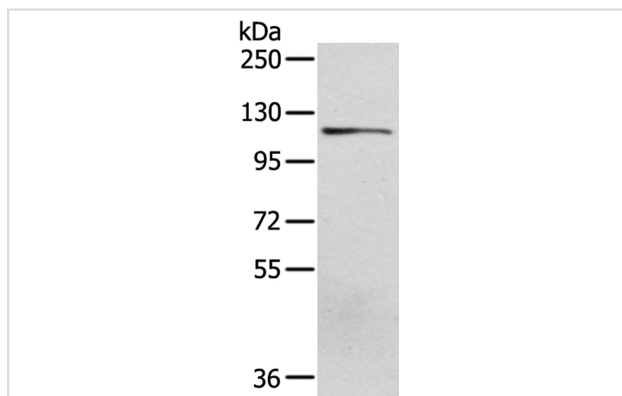
Product Name	UBA1 Antibody
Host Species	Rabbit
Clonality	Polyclonal
Purification	Antigen affinity purification.
Applications	WB IHC
Species Reactivity	Hu
Specificity	The antibody detects endogenous levels of total UBA1 protein.
Immunogen Type	Peptide
Immunogen Description	Synthetic peptide of human ubiquitin-like modifier activating enzyme 1
Target Name	UBA1
Other Names	A1S9; A1ST; GXP1; UBE1; A1S9T; AMCX1; POC20; SMAX2; UBA1A; UBE1X; CFAP124
Accession No.	Swiss-Prot:P22314Gene Accssion:NP_695012
Uniprot	P22314
GeneID	7317;
SDS-PAGE MW	118KD
Concentration	2.7mg/ml
Formulation	Rabbit IgG in pH7.4 PBS, 0.05% NaN ₃ , 40% Glycerol.
Storage	Store at -20°C

Application Details

Western blotting: 1:200-1:1000

Immunohistochemistry:1:30-1:150

Images

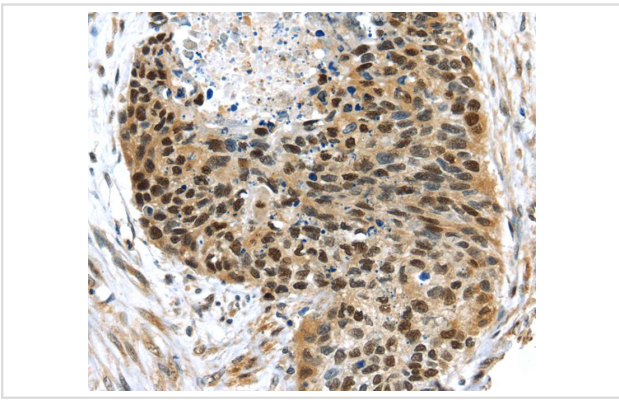


Gel: 6%SDS-PAGE

Lysate: 40ug Human fetal brain tissuePrimary antibody: 1/400 dilution

Secondary antibody dilution: 1/8000

Exposure time: 1 minute



Immunohistochemical analysis of paraffin-embedded Human esophagus cancer tissue using #40277 at dilution 1/40.

Background

The protein encoded by this gene catalyzes the first step in ubiquitin conjugation to mark cellular proteins for degradation. This gene complements an X-linked mouse temperature-sensitive defect in DNA synthesis, and thus may function in DNA repair. It is part of a gene cluster on chromosome Xp11.23. Alternatively spliced transcript variants that encode the same protein have been described.?

Note: This product is for in vitro research use only