

KDM5C Antibody

Catalog No: #40282

Orders: order@signalwayantibody.comSupport: tech@signalwayantibody.com

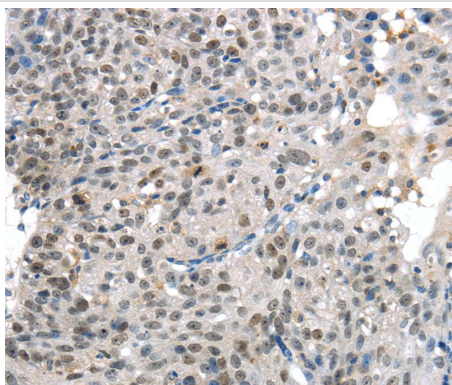
Description

Product Name	KDM5C Antibody
Host Species	Rabbit
Clonality	Polyclonal
Purification	Antigen affinity purification.
Applications	IHC
Species Reactivity	Hu
Specificity	The antibody detects endogenous levels of total KDM5C protein.
Immunogen Type	Peptide
Immunogen Description	Synthetic peptide of human lysine (K)-specific demethylase 5C
Target Name	KDM5C
Other Names	MRXJ; SMCX; MRX13; MRXSJ; XE169; MRXSCJ; JARID1C; DXS1272E
Accession No.	Swiss-Prot:P41229 Gene Accssion:NP_004178
Uniprot	P41229
GeneID	8242;
Concentration	3mg/ml
Formulation	Rabbit IgG in pH7.4 PBS, 0.05% NaN ₃ , 40% Glycerol.
Storage	Store at -20°C

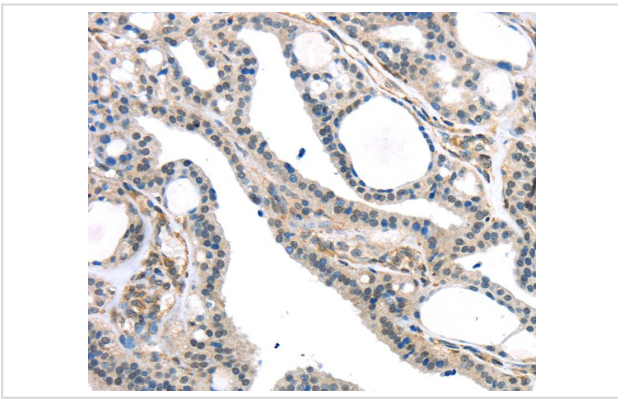
Application Details

Immunohistochemistry:1:30-1:150

Images



Immunohistochemical analysis of paraffin-embedded Human breast cancer tissue using #40282 at dilution 1/45.



Immunohistochemical analysis of paraffin-embedded Human thyroid cancer tissue using #40282 at dilution 1/45.

Background

This gene is a member of the SMCY homolog family and encodes a protein with one ARID domain, one JmjC domain, one JmjN domain and two PHD-type zinc fingers. The DNA-binding motifs suggest this protein is involved in the regulation of transcription and chromatin remodeling. Mutations in this gene have been associated with X-linked mental retardation. Alternative splicing results in multiple transcript variants.

Note: This product is for in vitro research use only