

ACD Antibody

Catalog No: #46923

Orders: order@signalwayantibody.comSupport: tech@signalwayantibody.com

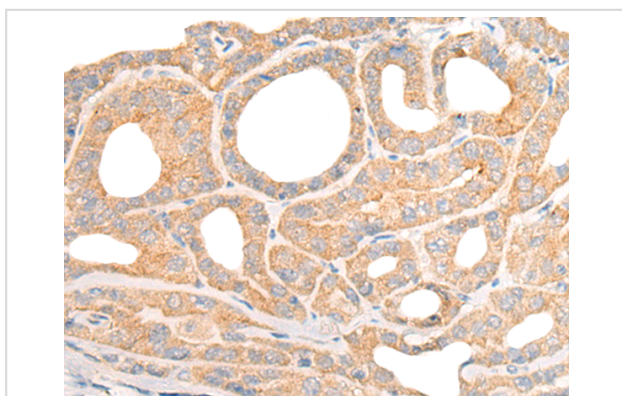
Description

Product Name	ACD Antibody
Host Species	Rabbit
Clonality	Polyclonal
Purification	Antigen affinity purification
Applications	IHC
Species Reactivity	Hu
Specificity	The antibody detects endogenous levels of total ACD protein.
Immunogen Type	peptide
Immunogen Description	Synthetic peptide of human ACD
Target Name	ACD
Other Names	PIP1; PTPN1; TPP1; TINT1
Accession No.	Swiss-Prot#:Q96AP0 NCBI Gene ID:65057 Gene Accession:NP_001075955
Uniprot	Q96AP0
GeneID	65057;
Concentration	0.6mg/ml
Formulation	Rabbit IgG in pH7.4 PBS, 0.05% NaN ₃ , 40% Glycerol.
Storage	Store at -20C

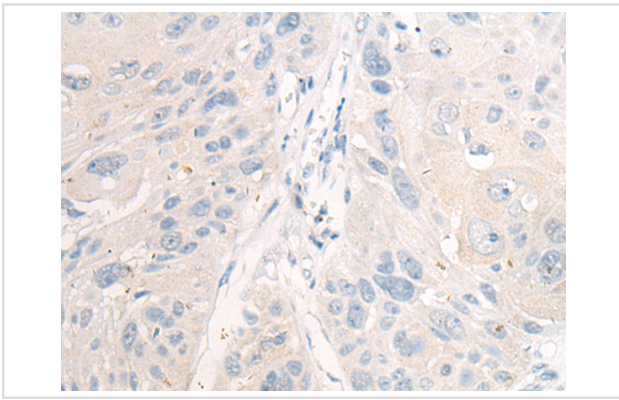
Application Details

Immunofluorescence: 1: 20-100

Images



The image is immunohistochemistry of paraffin-embedded Human thyroid cancer tissue using 46923(ACD Antibody) at dilution 1/20. (Original magnification: 200)



The image is immunohistochemistry of paraffin-embedded Human esophagus cancer tissue using 46923(ACD Antibody) at dilution 1/20. (Original magnification: ?00)

Background

This gene encodes a protein that is involved in telomere function. This protein is one of six core proteins in the telosome/shelterin telomeric complex, which functions to maintain telomere length and to protect telomere ends. Through its interaction with other components, this protein plays a key role in the assembly and stabilization of this complex, and it mediates the access of telomerase to the telomere. Multiple transcript variants encoding different isoforms have been found for this gene. This gene, which is also referred to as TPP1, is distinct from the unrelated TPP1 gene on chromosome 11, which encodes tripeptidyl-peptidase I.

Note: This product is for in vitro research use only