

ADGRE3 Antibody

Catalog No: #46925

Orders: order@signalwayantibody.comSupport: tech@signalwayantibody.com

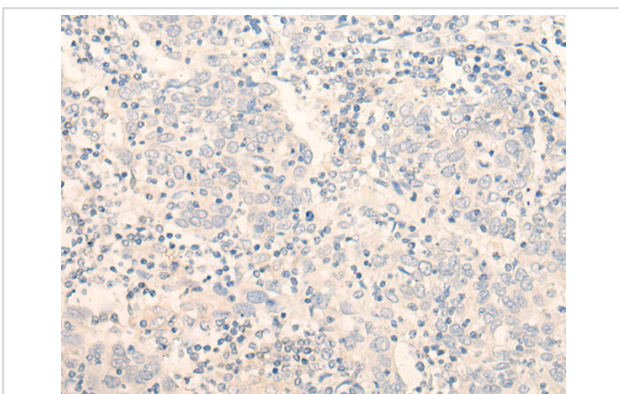
Description

Product Name	ADGRE3 Antibody
Host Species	Rabbit
Clonality	Polyclonal
Purification	Antigen affinity purification
Applications	WB, IHC
Species Reactivity	Hu
Specificity	The antibody detects endogenous levels of total ADGRE3 protein.
Immunogen Type	peptide
Immunogen Description	Synthetic peptide of human ADGRE3
Target Name	ADGRE3
Other Names	EMR3
Accession No.	Swiss-Prot#:Q9BY15NCBI Gene ID:84658Gene Accssion:NP_115960
Uniprot	Q9BY15
GeneID	84658;
Calculated MW	73 kDa
Concentration	1.4mg/ml
Formulation	Rabbit IgG in pH7.4 PBS, 0.05% NaN ₃ , 40% Glycerol.
Storage	Store at -20C

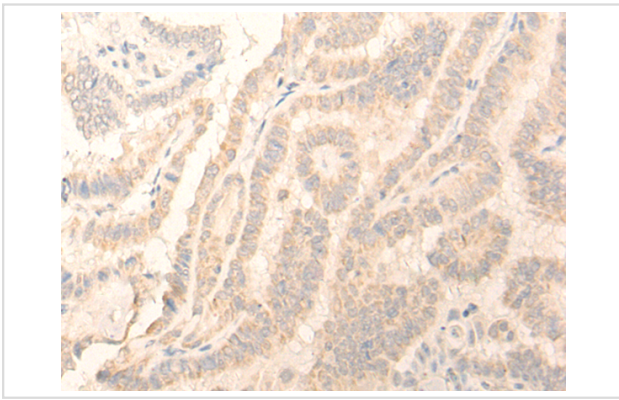
Application Details

Western blotting:1:500-2000Immunofluorescence:1: 40-200

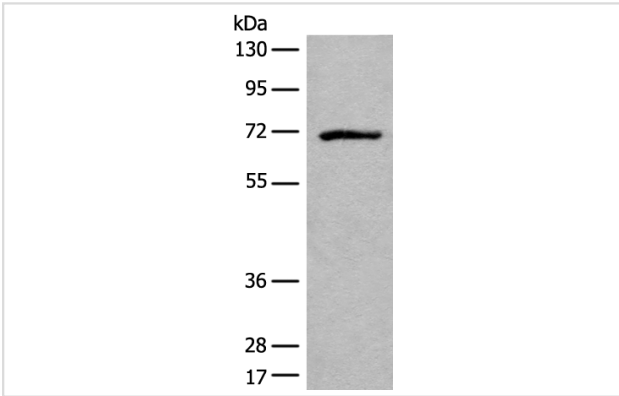
Images



The image is immunohistochemistry of paraffin-embedded Human cervical cancer tissue using 46925(ADGRE3 Antibody) at dilution 1/35. (Original magnification: ?00)



The image is immunohistochemistry of paraffin-embedded Human thyroid cancer tissue using 46925(ADGRE3 Antibody) at dilution 1/35. (Original magnification: ?00)



Gel: 8%SDS-PAGE
Lysate: 40 µg, Lane: Jurkat cell lysate
Primary antibody:ADGRE3 Antibody at dilution 1/550
Secondary antibody: Goat anti rabbit IgG at 1/8000 dilution
Exposure time: 1 minute

Background

This gene encodes a member of the class B seven-span transmembrane (TM7) receptor family expressed predominantly by cells of the immune system. Family members are characterized by an extended extracellular region with a variable number of N-terminal epidermal growth factor (EGF)-like domains coupled to a TM7 domain via a mucin-like spacer domain. This gene is closely linked to the gene encoding egf-like molecule containing mucin-like hormone receptor 2 on chromosome 19. This protein may play a role in myeloid-myeloid interactions during immune and inflammatory responses. Alternative splicing results in multiple transcript variants encoding different isoforms.

Note: This product is for in vitro research use only