

AHCTF1 Antibody

Catalog No: #46926

Orders: order@signalwayantibody.comSupport: tech@signalwayantibody.com

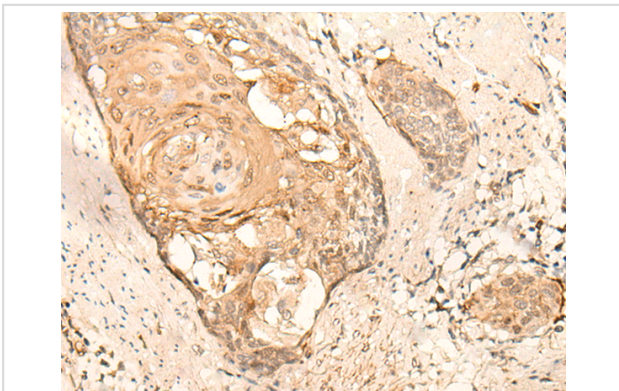
Description

Product Name	AHCTF1 Antibody
Host Species	Rabbit
Clonality	Polyclonal
Purification	Antigen affinity purification
Applications	IHC
Species Reactivity	Hu
Specificity	The antibody detects endogenous levels of total AHCTF1 protein.
Immunogen Type	peptide
Immunogen Description	Synthetic peptide of human AHCTF1
Target Name	AHCTF1
Other Names	ELYS; MST108; TMBS62; MSTP108
Accession No.	Swiss-Prot#:Q8WYP5 NCBI Gene ID:25909 Gene Accssion:NP_056261.4
Uniprot	Q8WYP5
GeneID	25909;
Concentration	0.4mg/ml
Formulation	Rabbit IgG in pH7.4 PBS, 0.05% NaN ₃ , 40% Glycerol.
Storage	Store at -20C

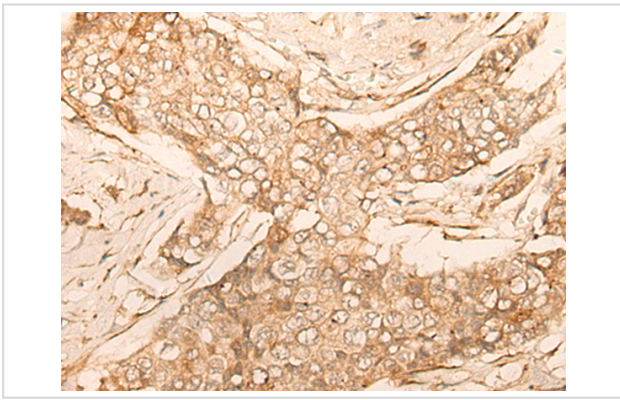
Application Details

Immunofluorescence: 1: 25-100

Images



The image is immunohistochemistry of paraffin-embedded Human esophagus cancer tissue using 46926(AHCTF1 Antibody) at dilution 1/20. (Original magnification: ?00)



The image is immunohistochemistry of paraffin-embedded Human breast cancer tissue using 46926(AHCTF1 Antibody) at dilution 1/20. (Original magnification: ?00)

Background

Required for the assembly of a functional nuclear pore complex (NPC) on the surface of chromosomes as nuclei form at the end of mitosis. May initiate NPC assembly by binding to chromatin and recruiting the Nup107-160 subcomplex of the NPC. Also required for the localization of the Nup107-160 subcomplex of the NPC to the kinetochore during mitosis and for the completion of cytokinesis.

Note: This product is for in vitro research use only