

USP28 Antibody

Catalog No: #40286

Orders: order@signalwayantibody.comSupport: tech@signalwayantibody.com

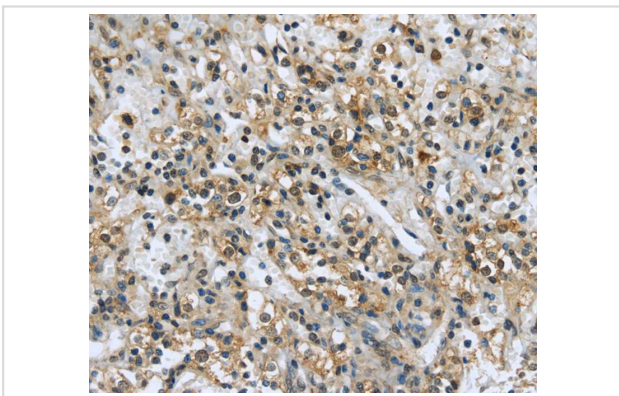
Description

Product Name	USP28 Antibody
Host Species	Rabbit
Clonality	Polyclonal
Purification	Antigen affinity purification.
Applications	IHC
Species Reactivity	Hu
Specificity	The antibody detects endogenous levels of total USP28 protein.
Immunogen Type	Peptide
Immunogen Description	Synthetic peptide of human ubiquitin specific peptidase 28
Target Name	USP28
Accession No.	Swiss-Prot:Q96RU2 Gene Accssion:NP_065937
Uniprot	Q96RU2
GeneID	57646;
Concentration	2.3mg/ml
Formulation	Rabbit IgG in pH7.4 PBS, 0.05% NaN ₃ , 40% Glycerol.
Storage	Store at -20°C

Application Details

Immunohistochemistry:1:25-1:100

Images



Immunohistochemical analysis of paraffin-embedded Human prostate cancer tissue using #40286 at dilution 1/35.

Background

The ubiquitin-dependent protein degradation pathway is essential for proteolysis of intracellular proteins and peptides. Enzymes that remove ubiquitin from ubiquitin-conjugated peptides, like USP28, affect the fate and degradation of intracellular proteins and are essential for maintenance of cell-free ubiquitin pools (Valero et al., 2001).

Note: This product is for in vitro research use only