

C11orf49 Antibody

Catalog No: #46937

Orders: order@signalwayantibody.comSupport: tech@signalwayantibody.com

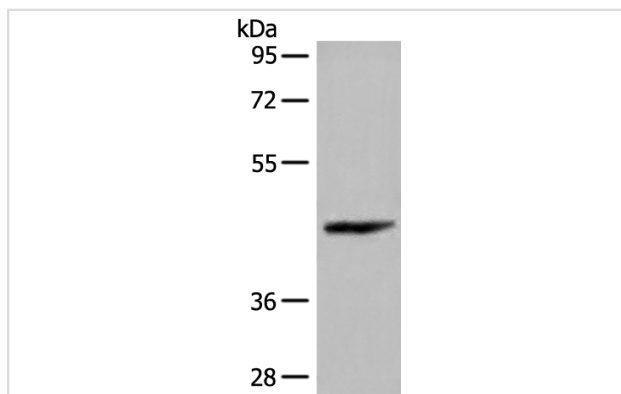
Description

Product Name	C11orf49 Antibody
Host Species	Rabbit
Clonality	Polyclonal
Purification	Antigen affinity purification
Applications	WB
Species Reactivity	Hu
Specificity	The antibody detects endogenous levels of total C11orf49 protein.
Immunogen Type	protein
Immunogen Description	Fusion protein of human C11orf49
Target Name	C11orf49
Accession No.	Swiss-Prot#:Q9H6J7NCBI Gene ID:102724023Gene Accssion:BC009455
Uniprot	Q9H6J7
GeneID	79096;
Calculated MW	38 kDa
Concentration	0.6mg/ml
Formulation	Rabbit IgG in pH7.4 PBS, 0.05% NaN ₃ , 40% Glycerol.
Storage	Store at -20C

Application Details

Western blotting:1:200-1000

Images



Gel: 8%SDS-PAGE

Lysate: 40 µg, Lane: Human stomach tissue lysates

Primary antibody:C11orf49 Antibody at dilution 1/300

Secondary antibody: Goat anti rabbit IgG at 1/8000 dilution

Exposure time: 15 seconds

Background

The function of this protein remains unknown.

Note: This product is for in vitro research use only