

CCL11 Antibody

Catalog No: #46940

Orders: order@signalwayantibody.comSupport: tech@signalwayantibody.com

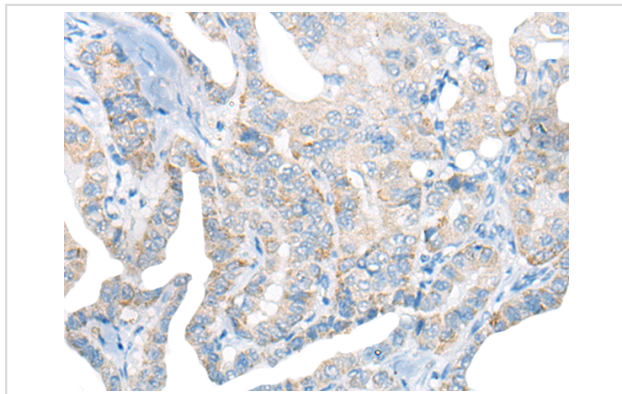
Description

Product Name	CCL11 Antibody
Host Species	Rabbit
Clonality	Polyclonal
Purification	Antigen affinity purification
Applications	IHC
Species Reactivity	Hu
Specificity	The antibody detects endogenous levels of total CCL11 protein.
Immunogen Type	peptide
Immunogen Description	Synthetic peptide of human CCL11
Target Name	CCL11
Other Names	SCYA11
Accession No.	Swiss-Prot#:P51671 NCBI Gene ID:6356Gene Accssion:NP_002977
Uniprot	P51671
GeneID	6356;
Concentration	1.1mg/ml
Formulation	Rabbit IgG in pH7.4 PBS, 0.05% NaN ₃ , 40% Glycerol.
Storage	Store at -20C

Application Details

Immunofluorescence:1: 20-100

Images



The image is immunohistochemistry of paraffin-embedded Human thyroid cancer tissue using 46940(CCL11 Antibody) at dilution 1/30. (Original magnification: ?00)

Background

This antimicrobial gene is one of several chemokine genes clustered on the q-arm of chromosome 17. Chemokines form a superfamily of secreted proteins involved in immunoregulatory and inflammatory processes. The superfamily is divided into four subfamilies based on the arrangement of the N-terminal cysteine residues of the mature peptide. This chemokine, a member of the CC subfamily, displays chemotactic activity for eosinophils, but not mononuclear cells or neutrophils. This eosinophil-specific chemokine is thought to be involved in eosinophilic inflammatory diseases such as atopic

dermatitis, allergic rhinitis, asthma and parasitic infections.?

Note: This product is for in vitro research use only