

CCL16 Antibody

Catalog No: #46941

Orders: order@signalwayantibody.comSupport: tech@signalwayantibody.com

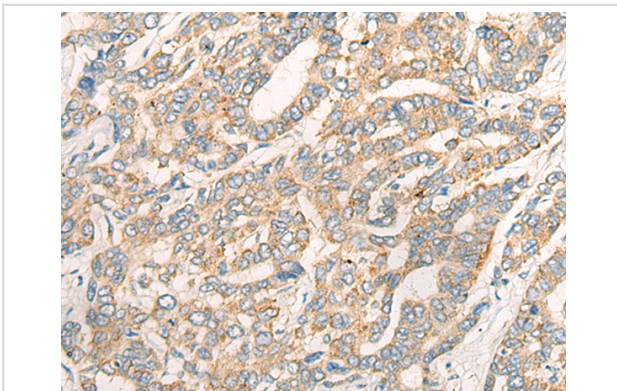
Description

Product Name	CCL16 Antibody
Host Species	Rabbit
Clonality	Polyclonal
Purification	Antigen affinity purification
Applications	IHC
Species Reactivity	Hu
Specificity	The antibody detects endogenous levels of total CCL16 protein.
Immunogen Type	peptide
Immunogen Description	Synthetic peptide of human CCL16
Target Name	CCL16
Other Names	LEC; LMC; NCC4; CKb12; HCC-4; LCC-1; Mtn-1; NCC-4; SCYL4; ILINCK; SCYA16
Accession No.	Swiss-Prot#:O15467 NCBI Gene ID:6360Gene Accssion:NP_004581
Uniprot	O15467
GeneID	6360;
Concentration	2.2mg/ml
Formulation	Rabbit IgG in pH7.4 PBS, 0.05% NaN ₃ , 40% Glycerol.
Storage	Store at -20C

Application Details

Immunofluorescence:1: 20-100

Images



The image is immunohistochemistry of paraffin-embedded Human liver cancer tissue using 46941(CCL16 Antibody) at dilution 1/45. (Original magnification: 200)

Background

This gene is one of several cytokine genes clustered on the q-arm of chromosome 17. Cytokines are a family of secreted proteins involved in immunoregulatory and inflammatory processes. The CC cytokines are proteins characterized by two adjacent cysteines. The cytokine encoded by this gene displays chemotactic activity for lymphocytes and monocytes but not for neutrophils. This cytokine also shows a potent myelosuppressive activity and suppresses proliferation of myeloid progenitor cells. The expression of this gene is upregulated by IL-10.

Note: This product is for in vitro research use only