

## CCL19 Antibody

Catalog No: #46942

Orders: [order@signalwayantibody.com](mailto:order@signalwayantibody.com)Support: [tech@signalwayantibody.com](mailto:tech@signalwayantibody.com)

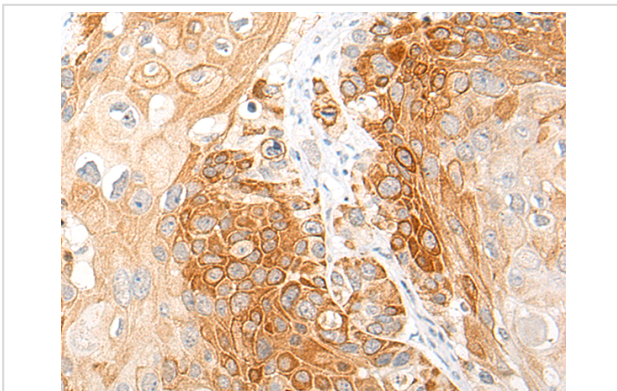
## Description

Product Name	CCL19 Antibody
Host Species	Rabbit
Clonality	Polyclonal
Purification	Antigen affinity purification
Applications	IHC
Species Reactivity	Hu
Specificity	The antibody detects endogenous levels of total CCL19 protein.
Immunogen Type	peptide
Immunogen Description	Synthetic peptide of human CCL19
Target Name	CCL19
Other Names	ELC; CKb11; MIP3B; MIP-3b; SCYA19
Accession No.	Swiss-Prot#:Q99731 NCBI Gene ID:6363Gene Accssion:NP_006265
Uniprot	Q99731
GeneID	6363;
Concentration	0.5mg/ml
Formulation	Rabbit IgG in pH7.4 PBS, 0.05% NaN <sub>3</sub> , 40% Glycerol.
Storage	Store at -20C

## Application Details

Immunofluorescence:1: 25-100

## Images



The image is immunohistochemistry of paraffin-embedded Human esophagus cancer tissue using 46942(CCL19 Antibody) at dilution 1/20. (Original magnification: ?00)

## Background

This antimicrobial gene is one of several CC cytokine genes clustered on the p-arm of chromosome 9. Cytokines are a family of secreted proteins involved in immunoregulatory and inflammatory processes. The CC cytokines are proteins characterized by two adjacent cysteines. The cytokine encoded by this gene may play a role in normal lymphocyte recirculation and homing. It also plays an important role in trafficking of T cells in thymus, and in T cell and B cell migration to secondary lymphoid organs. It specifically binds to chemokine receptor CCR7.

---

Note: This product is for in vitro research use only