

CCNJ Antibody

Catalog No: #46943

Orders: order@signalwayantibody.comSupport: tech@signalwayantibody.com

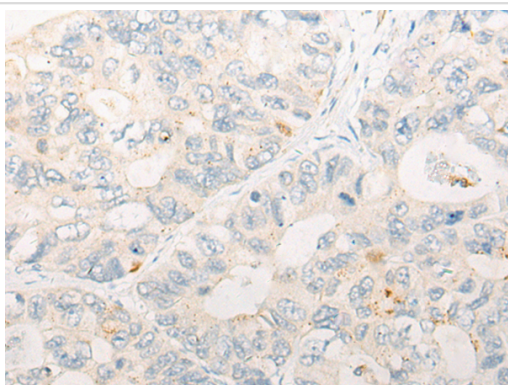
Description

Product Name	CCNJ Antibody
Host Species	Rabbit
Clonality	Polyclonal
Purification	Antigen affinity purification
Applications	WB, IHC
Species Reactivity	Hu
Specificity	The antibody detects endogenous levels of total CCNJ protein.
Immunogen Type	peptide
Immunogen Description	Synthetic peptide of human CCNJ
Target Name	CCNJ
Other Names	bA690P14.1
Accession No.	Swiss-Prot#:Q5T5M9 NCBI Gene ID:54619Gene Accssion:NP_061957
Uniprot	Q5T5M9
GeneID	54619;
Calculated MW	43 kDa
Concentration	0.7mg/ml
Formulation	Rabbit IgG in pH7.4 PBS, 0.05% NaN ₃ , 40% Glycerol.
Storage	Store at -20C

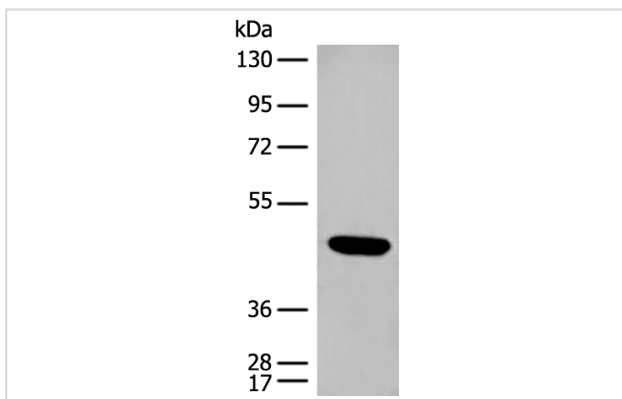
Application Details

Western blotting:1:200-1000Immunofluorescence:1: 20-100

Images



The image is immunohistochemistry of paraffin-embedded Human gastric cancer tissue using 46943(CCNJ Antibody) at dilution 1/20. (Original magnification: ?00)



Gel: 8%SDS-PAGE
Lysate: 40 µg, Lane: K562 cell lysate
Primary antibody:CCNJ Antibody at dilution 1/250
Secondary antibody: Goat anti rabbit IgG at 1/8000 dilution
Exposure time: 1 minute

Background

Cyclin J is a 372 amino acid protein encoded by the human gene CCNJ located on chromosome 10. Cyclin J belongs to the cyclin family and contains one cyclin N-terminal domain. A cyclin forms a complex with its partner cyclin-dependent kinase (Cdk), which activates the protein kinase function of the Cdk. Cyclins are so named because their concentration varies in a cyclical fashion during the cell cycle. They are produced or degraded as needed in order to drive the cell through the different stages of the cell cycle. When its concentrations in the cell are low, the cyclin detaches from the Cdk, inhibiting the activity of the enzyme, probably by causing a protein chain to block the enzymatic site. Cyclin J-associated kinase activity is required for the early embryonic division cycles.

Note: This product is for in vitro research use only