

CCP110 Antibody

Catalog No: #46945

Orders: order@signalwayantibody.comSupport: tech@signalwayantibody.com

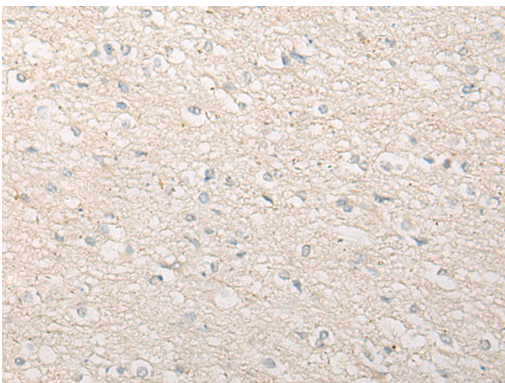
Description

| | |
|-----------------------|---|
| Product Name | CCP110 Antibody |
| Host Species | Rabbit |
| Clonality | Polyclonal |
| Purification | Antigen affinity purification |
| Applications | IHC |
| Species Reactivity | Hu |
| Specificity | The antibody detects endogenous levels of total CCP110 protein. |
| Immunogen Type | peptide |
| Immunogen Description | Synthetic peptide of human CCP110 |
| Target Name | CCP110 |
| Other Names | CP110; Cep110 |
| Accession No. | Swiss-Prot#:O43303 NCBI Gene ID:9738Gene Accssion:NP_055526 |
| Uniprot | O43303 |
| GeneID | 9738; |
| Concentration | 0.6mg/ml |
| Formulation | Rabbit IgG in pH7.4 PBS, 0.05% NaN ₃ , 40% Glycerol. |
| Storage | Store at -20C |

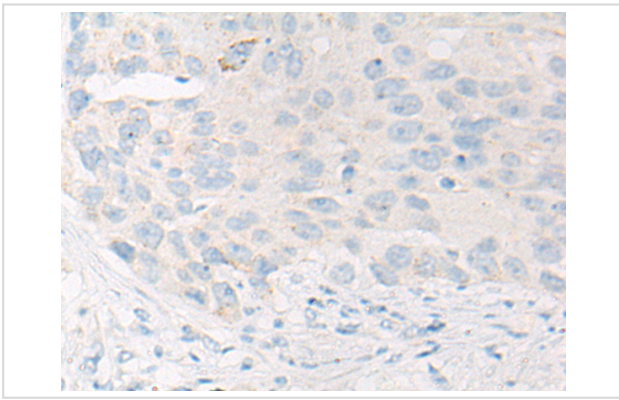
Application Details

Immunofluorescence:1: 20-100

Images



The image is immunohistochemistry of paraffin-embedded Human brain tissue using 46945(CCP110 Antibody) at dilution 1/20. (Original magnification: ?00)



The image is immunohistochemistry of paraffin-embedded Human esophagus cancer tissue using 46945(CCP110 Antibody) at dilution 1/20. (Original magnification: ?00)

Background

Necessary for centrosome duplication at different stages of procentriole formation. Acts as a key negative regulator of ciliogenesis in collaboration with CEP97 by capping the mother centriole thereby preventing cilia formation (PubMed:17719545?PubMed:17681131, PubMed:23486064). Also involved in promoting ciliogenesis. May play a role in the assembly of the mother centriole subdistal appendages (SDA) thereby effecting the fusion of recycling endosomes to basal bodies during cilia formation (By similarity). Required for correct spindle formation and has a role in regulating cytokinesis and genome stability via cooperation with CALM1 and CETN2 (PubMed:16760425).

Note: This product is for in vitro research use only