

MPP6 Antibody

Catalog No: #40288

Orders: order@signalwayantibody.comSupport: tech@signalwayantibody.com

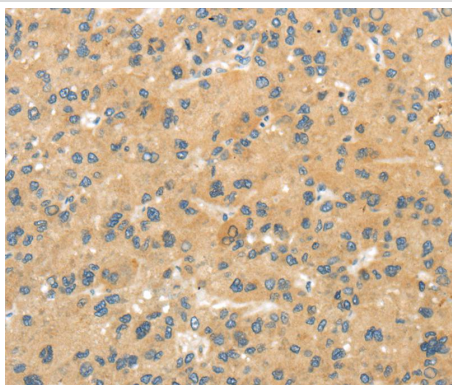
Description

Product Name	MPP6 Antibody
Host Species	Rabbit
Clonality	Polyclonal
Purification	Antigen affinity purification.
Applications	IHC
Species Reactivity	Hu
Specificity	The antibody detects endogenous levels of total MPP6 protein.
Immunogen Type	Peptide
Immunogen Description	Synthetic peptide of human membrane protein, palmitoylated 6 (MAGUK p55 subfamily member 6)
Target Name	MPP6
Other Names	VAM1; p55T; PALS2; VAM-1
Accession No.	Swiss-Prot:Q9NZW5 Gene Accssion:NP_057531
Uniprot	Q9NZW5
GeneID	51678;
Concentration	2.6mg/ml
Formulation	Rabbit IgG in pH7.4 PBS, 0.05% NaN ₃ , 40% Glycerol.
Storage	Store at -20°C

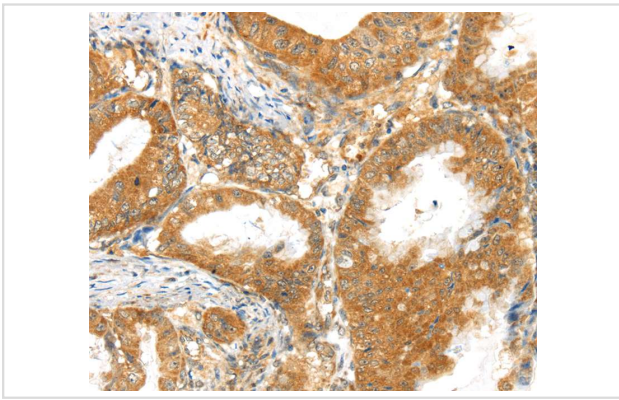
Application Details

Immunohistochemistry:1:30-1:150

Images



Immunohistochemical analysis of paraffin-embedded Human liver cancer tissue using #40288 at dilution 1/40.



Immunohistochemical analysis of paraffin-embedded Human esophagus cancer tissue using #40288 at dilution 1/40.

Background

Members of the peripheral membrane-associated guanylate kinase (MAGUK) family function in tumor suppression and receptor clustering by forming multiprotein complexes containing distinct sets of transmembrane, cytoskeletal, and cytoplasmic signaling proteins. All MAGUKs contain a PDZ-SH3-GUK core and are divided into 4 subfamilies, DLG-like (see DLG1; MIM 601014), ZO1-like (see TJP1; MIM 601009), p55-like (see MPP1; MIM 305360), and LIN2-like (see CASK; MIM 300172), based on their size and the presence of additional domains. MPP6 is a member of the p55-like MAGUK subfamily (Tseng et al., 2001 [PubMed 11311936]).

Note: This product is for in vitro research use only