

CELA3A Antibody

Catalog No: #46948

Orders: order@signalwayantibody.comSupport: tech@signalwayantibody.com

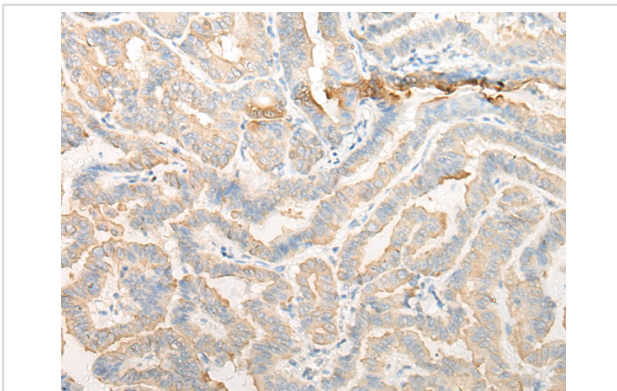
Description

Product Name	CELA3A Antibody
Host Species	Rabbit
Clonality	Polyclonal
Purification	Antigen affinity purification
Applications	IHC
Species Reactivity	Hu
Specificity	The antibody detects endogenous levels of total CELA3A protein.
Immunogen Type	protein
Immunogen Description	Fusion protein of human CELA3A
Target Name	CELA3A
Other Names	ELA3; ELA3A
Accession No.	Swiss-Prot#:P09093NCBI Gene ID:10136Gene Accssion:BC008383
Uniprot	P09093
GeneID	10136;
Concentration	0.8mg/ml
Formulation	Rabbit IgG in pH7.4 PBS, 0.05% NaN ₃ , 40% Glycerol.
Storage	Store at -20C

Application Details

Immunofluorescence:1: 20-100

Images



The image is immunohistochemistry of paraffin-embedded Human thyroid cancer tissue using 46948(CELA3A Antibody) at dilution 1/25. (Original magnification: ?00)

Background

Elastases form a subfamily of serine proteases that hydrolyze many proteins in addition to elastin. Humans have six elastase genes which encode the structurally similar proteins elastase 1, 2, 2A, 2B, 3A, and 3B. Unlike other elastases, elastase 3A has little elastolytic activity. Like most of the human elastases, elastase 3A is secreted from the pancreas as a zymogen and, like other serine proteases such as trypsin, chymotrypsin and kallikrein, it has a digestive function in the intestine. Elastase 3A preferentially cleaves proteins after alanine residues. Elastase 3A may also function in the

intestinal transport and metabolism of cholesterol. Both elastase 3A and elastase 3B have been referred to as protease E and as elastase 1.

Note: This product is for in vitro research use only