

CHAC2 Antibody

Catalog No: #46950

Orders: order@signalwayantibody.comSupport: tech@signalwayantibody.com

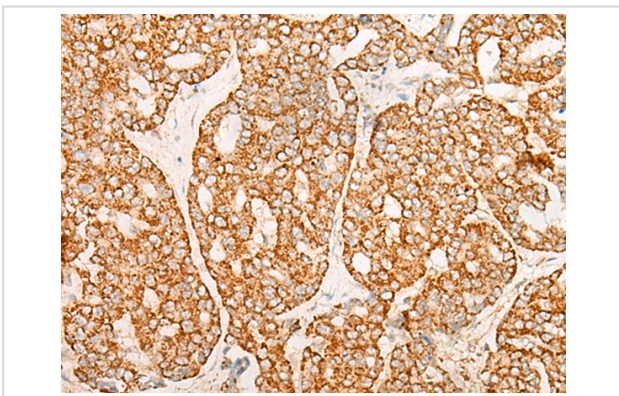
Description

| | |
|-----------------------|---|
| Product Name | CHAC2 Antibody |
| Host Species | Rabbit |
| Clonality | Polyclonal |
| Purification | Antigen affinity purification |
| Applications | IHC |
| Species Reactivity | Hu |
| Specificity | The antibody detects endogenous levels of total CHAC2 protein. |
| Immunogen Type | protein |
| Immunogen Description | Full length fusion protein |
| Target Name | CHAC2 |
| Accession No. | Swiss-Prot#:Q8WUX2NCBI Gene ID:494143Gene Accssion:BC019239 |
| Uniprot | Q8WUX2 |
| GeneID | 494143; |
| Concentration | 0.5mg/ml |
| Formulation | Rabbit IgG in pH7.4 PBS, 0.05% NaN ₃ , 40% Glycerol. |
| Storage | Store at -20C |

Application Details

Immunofluorescence:1: 25-100

Images



The image is immunohistochemistry of paraffin-embedded Human liver cancer tissue using 46950(CHAC2 Antibody) at dilution 1/20. (Original magnification: ?00)

Background

The protein encoded by this gene is a gamma-glutamyl cyclotransferase that catalyzes the conversion of glutathione to 5-oxoproline and cysteinylglycine. It is thought that this gene is upregulated in response to endoplasmic reticulum stress and that the glutathione depletion enhances apoptosis.

Note: This product is for in vitro research use only