

CHERP Antibody

Catalog No: #46951

Orders: order@signalwayantibody.comSupport: tech@signalwayantibody.com

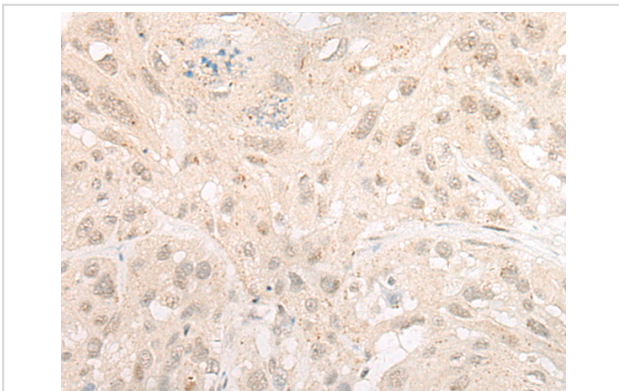
Description

Product Name	CHERP Antibody
Host Species	Rabbit
Clonality	Polyclonal
Purification	Antigen affinity purification
Applications	IHC
Species Reactivity	Hu
Specificity	The antibody detects endogenous levels of total CHERP protein.
Immunogen Type	protein
Immunogen Description	Fusion protein of human CHERP
Target Name	CHERP
Other Names	SRA1; DAN16; SCAF6
Accession No.	Swiss-Prot#:Q8IWX8NCBI Gene ID:10523Gene Accssion:BC021294
Uniprot	Q8IWX8
GeneID	10523;
Concentration	0.6mg/ml
Formulation	Rabbit IgG in pH7.4 PBS, 0.05% NaN ₃ , 40% Glycerol.
Storage	Store at -20C

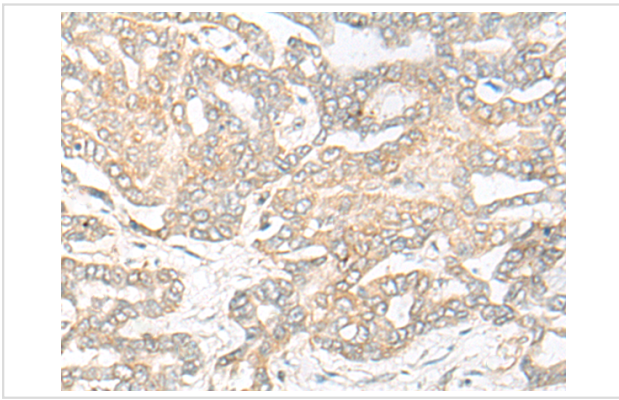
Application Details

Immunofluorescence:1: 20-100

Images



The image is immunohistochemistry of paraffin-embedded Human esophagus cancer tissue using 46951(CHERP Antibody) at dilution 1/20. (Original magnification: ?00)



The image is immunohistochemistry of paraffin-embedded Human liver cancer tissue using 46951(ChERP Antibody) at dilution 1/20. (Original magnification: 200)

Background

The regulation of the intracellular concentration of calcium is important for proper maintenance of voltage-gated ion channels which control muscle and nerve function. Calcium homeostasis is regulated by a variety of proteins. ChERP (calcium homeostasis endoplasmic reticulum protein), also known as SRA1, DAN16 or SCAF6, is a 916 amino acid protein that localizes to the cytoplasm and the endoplasmic reticulum (ER). Expressed in pancreas, brain, lung, placenta, liver, kidney, heart and skeletal muscle, ChERP is involved in maintaining calcium homeostasis and plays a role in cell growth and proliferation. ChERP contains one G-patch domain, one RPR domain and one SURP motif and is expressed as two isoforms due to alternative splicing events.

Note: This product is for in vitro research use only