

CHI3L2 Antibody

Catalog No: #46952

Orders: order@signalwayantibody.comSupport: tech@signalwayantibody.com

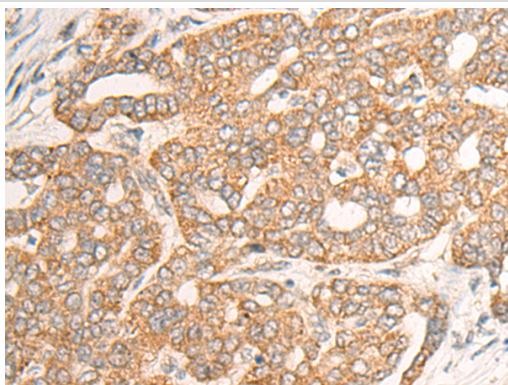
Description

Product Name	CHI3L2 Antibody
Host Species	Rabbit
Clonality	Polyclonal
Purification	Antigen affinity purification
Applications	IHC
Species Reactivity	Hu
Specificity	The antibody detects endogenous levels of total CHI3L2 protein.
Immunogen Type	protein
Immunogen Description	Fusion protein of human CHI3L2
Target Name	CHI3L2
Other Names	CHIL2; YKL39; YKL-39
Accession No.	Swiss-Prot#:Q15782NCBI Gene ID:1117Gene Accssion:BC011460
Uniprot	Q15782
GeneID	1117;
Concentration	1mg/ml
Formulation	Rabbit IgG in pH7.4 PBS, 0.05% NaN ₃ , 40% Glycerol.
Storage	Store at -20C

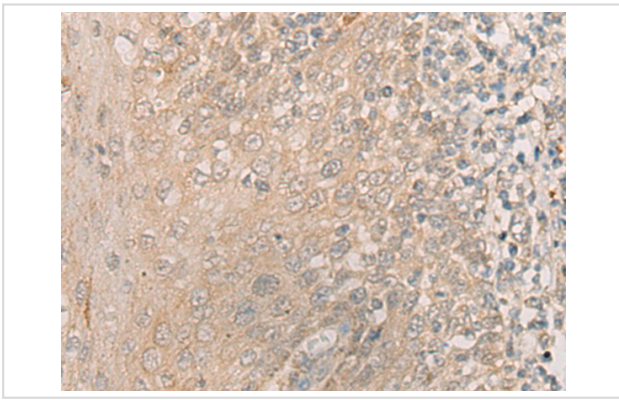
Application Details

Immunofluorescence:1: 25-100

Images



The image is immunohistochemistry of paraffin-embedded Human liver cancer tissue using 46952(CHI3L2 Antibody) at dilution 1/35. (Original magnification: 200)



The image is immunohistochemistry of paraffin-embedded Human tonsil tissue using 46952(CHI3L2 Antibody) at dilution 1/35. (Original magnification: ?00)

Background

The protein encoded by this gene is similar to bacterial chitinases but lacks chitinase activity. The encoded protein is secreted and is involved in cartilage biogenesis. Several transcript variants encoding different isoforms have been found for this gene.?

Note: This product is for in vitro research use only