

## CHKB-CPT1B Antibody

Catalog No: #46953

Orders: [order@signalwayantibody.com](mailto:order@signalwayantibody.com)Support: [tech@signalwayantibody.com](mailto:tech@signalwayantibody.com)

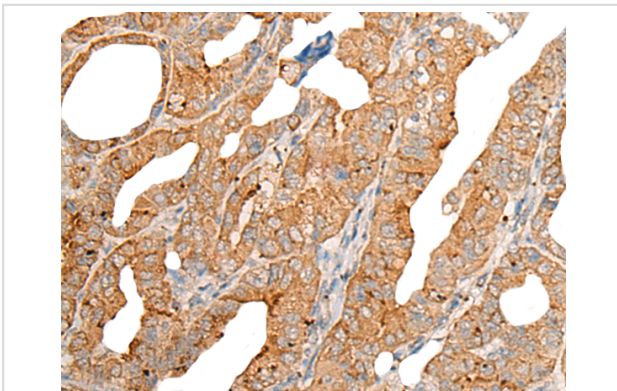
## Description

Product Name	CHKB-CPT1B Antibody
Host Species	Rabbit
Clonality	Polyclonal
Purification	Antigen affinity purification
Applications	IHC
Species Reactivity	Hu
Specificity	The antibody detects endogenous levels of total CHKB-CPT1B protein.
Immunogen Type	protein
Immunogen Description	Fusion protein of human CHKB-CPT1B
Target Name	CHKB-CPT1B
Other Names	CHKL-CPT1B
Accession No.	Swiss-Prot#:Q92523NCBI Gene ID:1375Gene Accssion:BC131570
Uniprot	Q92523
GeneID	1375;
Concentration	1.1mg/ml
Formulation	Rabbit IgG in pH7.4 PBS, 0.05% NaN <sub>3</sub> , 40% Glycerol.
Storage	Store at -20C

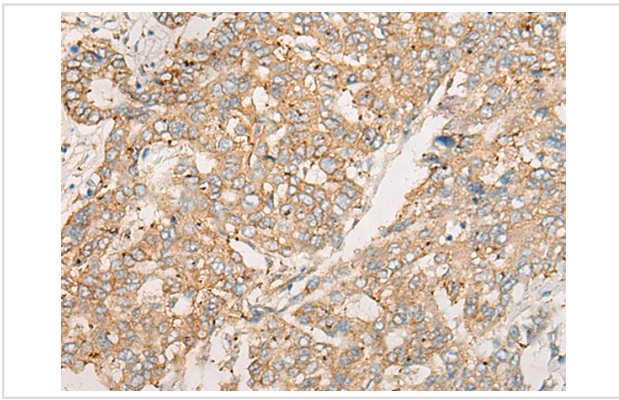
## Application Details

Immunofluorescence:1: 25-100

## Images



The image is immunohistochemistry of paraffin-embedded Human thyroid cancer tissue using 46953(CHKB-CPT1B Antibody) at dilution 1/35. (Original magnification: ?00)



The image is immunohistochemistry of paraffin-embedded Human liver cancer tissue using 46953(CHKB-CPT1B Antibody) at dilution 1/35. (Original magnification: ?00)

## Background

The genes CHKB and CPT1B are adjacent on chromosome 22 and read-through transcripts are expressed that include exons from both loci. The read-through transcripts are candidates for nonsense-mediated mRNA decay (NMD) and are unlikely to express proteins.?

Note: This product is for in vitro research use only