

## CLEC12A Antibody

Catalog No: #46955

Orders: [order@signalwayantibody.com](mailto:order@signalwayantibody.com)Support: [tech@signalwayantibody.com](mailto:tech@signalwayantibody.com)

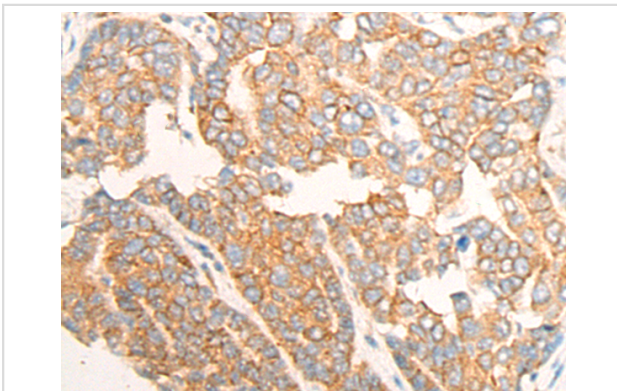
## Description

Product Name	CLEC12A Antibody
Host Species	Rabbit
Clonality	Polyclonal
Purification	Antigen affinity purification
Applications	IHC
Species Reactivity	Hu
Specificity	The antibody detects endogenous levels of total CLEC12A protein.
Immunogen Type	peptide
Immunogen Description	Synthetic peptide of human CLEC12A
Target Name	CLEC12A
Other Names	CLL1; MICL; CD371; CLL-1; DCAL-2
Accession No.	Swiss-Prot#:Q5QGZ9NCBI Gene ID:160364Gene Accssion:NP_001193939
Uniprot	Q5QGZ9
GeneID	160364;
Concentration	0.5mg/ml
Formulation	Rabbit IgG in pH7.4 PBS, 0.05% NaN <sub>3</sub> , 40% Glycerol.
Storage	Store at -20C

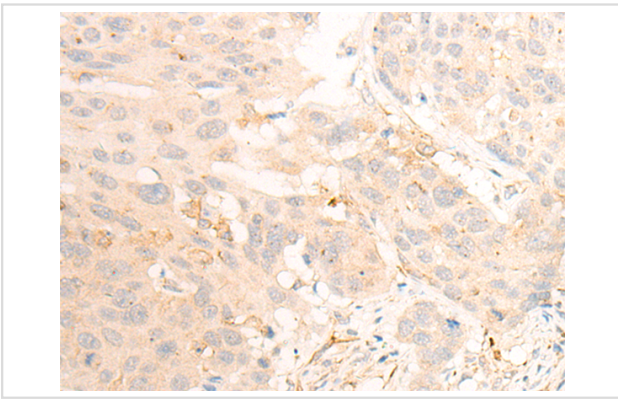
## Application Details

Immunofluorescence:1: 20-100

## Images



The image is immunohistochemistry of paraffin-embedded Human liver cancer tissue using 46955(CLEC12A Antibody) at dilution 1/20. (Original magnification: ?00)



The image is immunohistochemistry of paraffin-embedded Human esophagus cancer tissue using 46955(CLEC12A Antibody) at dilution 1/20. (Original magnification: ?00)

## Background

This gene encodes a member of the C-type lectin/C-type lectin-like domain (CTL/CTLD) superfamily. Members of this family share a common protein fold and have diverse functions, such as cell adhesion, cell-cell signaling, glycoprotein turnover, and roles in inflammation and immune response. The protein encoded by this gene is a negative regulator of granulocyte and monocyte function. Several alternatively spliced transcript variants of this gene have been described, but the full-length nature of some of these variants has not been determined. This gene is closely linked to other CTL/CTLD superfamily members in the natural killer gene complex region on chromosome 12p13.

Note: This product is for in vitro research use only