

CLIP2 Antibody

Catalog No: #46956

Orders: order@signalwayantibody.comSupport: tech@signalwayantibody.com

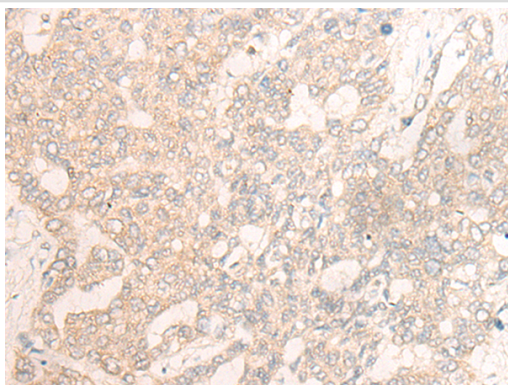
Description

Product Name	CLIP2 Antibody
Host Species	Rabbit
Clonality	Polyclonal
Purification	Antigen affinity purification
Applications	WB, IHC
Species Reactivity	Hu
Specificity	The antibody detects endogenous levels of total CLIP2 protein.
Immunogen Type	peptide
Immunogen Description	Synthetic peptide of human CLIP2
Target Name	CLIP2
Other Names	CLIP; CYLN2; WSCR3; WSCR4; WBSCR3; WBSCR4; CLIP-115
Accession No.	Swiss-Prot#:Q9UDT6NCBI Gene ID:7461Gene Accssion:NP_003379
Uniprot	Q9UDT6
GeneID	7461;
Calculated MW	116 kDa
Concentration	0.7mg/ml
Formulation	Rabbit IgG in pH7.4 PBS, 0.05% NaN ₃ , 40% Glycerol.
Storage	Store at -20C

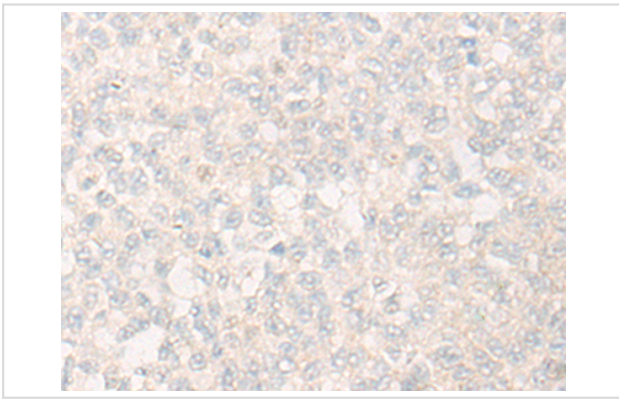
Application Details

Western blotting:1:200-1000Immunofluorescence:1: 20-100

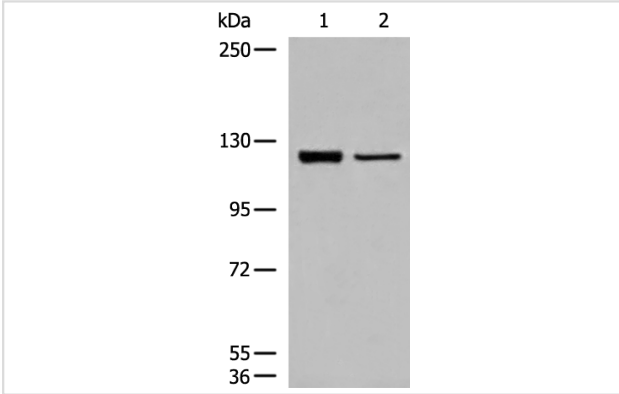
Images



The image is immunohistochemistry of paraffin-embedded Human liver cancer tissue using 46956(CLIP2 Antibody) at dilution 1/20. (Original magnification: ?00)



The image is immunohistochemistry of paraffin-embedded Human ovarian cancer tissue using 46956(CLIP2 Antibody) at dilution 1/20. (Original magnification: 200)



Gel: 6%SDS-PAGE
Lysate: 40 µg, Lane 1-2: LOVO and NIH/3T3 cell lysates
Primary antibody:CLIP2 Antibody at dilution 1/300
Secondary antibody: Goat anti rabbit IgG at 1/8000 dilution
Exposure time: 40 seconds

Background

The protein encoded by this gene belongs to the family of cytoplasmic linker proteins, which have been proposed to mediate the interaction between specific membranous organelles and microtubules. This protein was found to associate with both microtubules and an organelle called the dendritic lamellar body. This gene is hemizygotously deleted in Williams syndrome, a multisystem developmental disorder caused by the deletion of contiguous genes at 7q11.23. Alternative splicing of this gene generates 2 transcript variants.

Note: This product is for in vitro research use only