

## COG2 Antibody

Catalog No: #46965

Orders: [order@signalwayantibody.com](mailto:order@signalwayantibody.com)Support: [tech@signalwayantibody.com](mailto:tech@signalwayantibody.com)

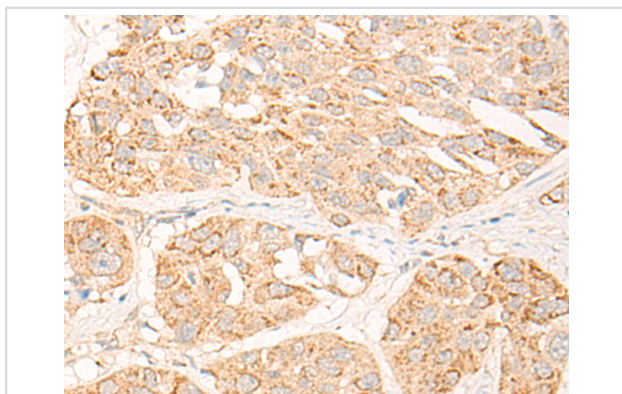
## Description

Product Name	COG2 Antibody
Host Species	Rabbit
Clonality	Polyclonal
Purification	Antigen affinity purification
Applications	IHC
Species Reactivity	Hu
Specificity	The antibody detects endogenous levels of total COG2 protein.
Immunogen Type	protein
Immunogen Description	Fusion protein of human COG2
Target Name	COG2
Other Names	LDLC
Accession No.	Swiss-Prot#:Q14746NCBI Gene ID:22796Gene Accssion:BC014960
Uniprot	Q14746
GeneID	22796;
Concentration	0.8mg/ml
Formulation	Rabbit IgG in pH7.4 PBS, 0.05% NaN <sub>3</sub> , 40% Glycerol.
Storage	Store at -20C

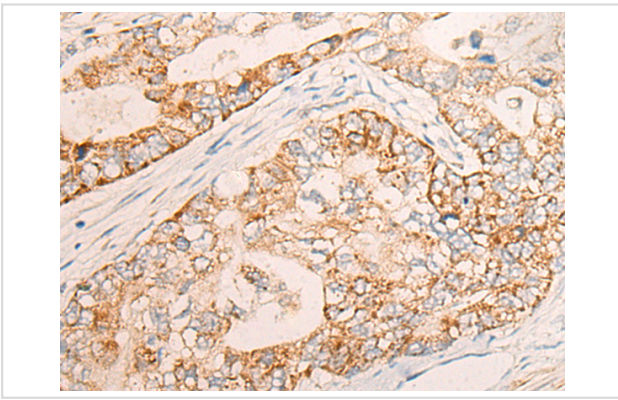
## Application Details

Immunofluorescence:1: 25-100

## Images



The image is immunohistochemistry of paraffin-embedded Human esophagus cancer tissue using 46965(COG2 Antibody) at dilution 1/30. (Original magnification: ?00)



The image is immunohistochemistry of paraffin-embedded Human gastric cancer tissue using 46965(COG2 Antibody) at dilution 1/30. (Original magnification: 200)

## Background

This gene encodes a subunit of the conserved oligomeric Golgi complex that is required for maintaining normal structure and activity of the Golgi complex. The encoded protein specifically interacts with the USO1 vesicle docking protein and may be necessary for normal Golgi ribbon formation and trafficking of Golgi enzymes. Mutations of this gene are associated with abnormal glycosylation within the Golgi apparatus. Alternative splicing results in multiple transcript variants.

Note: This product is for in vitro research use only