

## COL7A1 Antibody

Catalog No: #46968

Orders: [order@signalwayantibody.com](mailto:order@signalwayantibody.com)Support: [tech@signalwayantibody.com](mailto:tech@signalwayantibody.com)

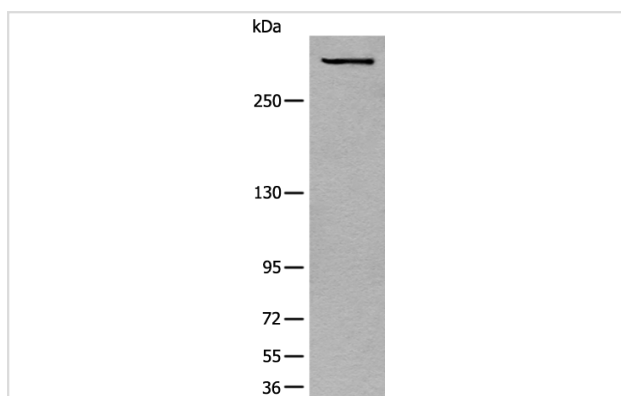
## Description

Product Name	COL7A1 Antibody
Host Species	Rabbit
Clonality	Polyclonal
Purification	Antigen affinity purification
Applications	WB
Species Reactivity	Hu
Specificity	The antibody detects endogenous levels of total COL7A1 protein.
Immunogen Type	peptide
Immunogen Description	Synthetic peptide of human COL7A1
Target Name	COL7A1
Other Names	EBD1; EBR1; EBDCT; NDNC8
Accession No.	Swiss-Prot#:Q02388NCBI Gene ID:1294Gene Accssion:NP_000085
Uniprot	Q02388
GeneID	1294;
Calculated MW	295 kDa
Concentration	0.8mg/ml
Formulation	Rabbit IgG in pH7.4 PBS, 0.05% NaN <sub>3</sub> , 40% Glycerol.
Storage	Store at -20C

## Application Details

Western blotting:1:200-1000

## Images



Gel: 6%SDS-PAGE

Lysate: 40 µg, Lane: A172 cell lysate

Primary antibody:COL7A1 Antibody at dilution 1/200

Secondary antibody: Goat anti rabbit IgG at 1/8000 dilution

Exposure time: 10 minutes

## Background

This gene encodes the alpha chain of type VII collagen. The type VII collagen fibril, composed of three identical alpha collagen chains, is restricted to the basement zone beneath stratified squamous epithelia. It functions as an anchoring fibril between the external epithelia and the underlying stroma.

Mutations in this gene are associated with all forms of dystrophic epidermolysis bullosa. In the absence of mutations, however, an acquired form of this disease can result from an autoimmune response made to type VII collagen.

---

Note: This product is for in vitro research use only