

COPS6 Antibody

Catalog No: #46970

Orders: order@signalwayantibody.comSupport: tech@signalwayantibody.com

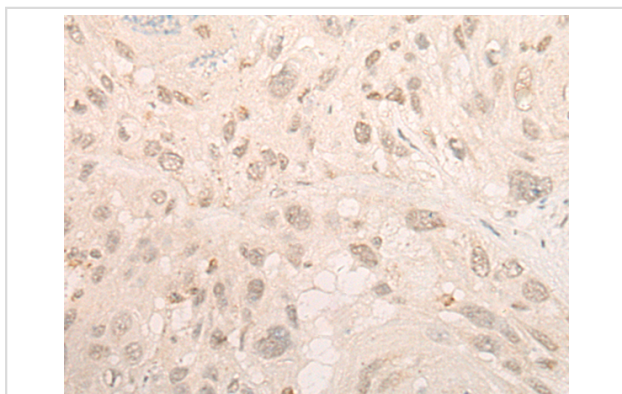
Description

Product Name	COPS6 Antibody
Host Species	Rabbit
Clonality	Polyclonal
Purification	Antigen affinity purification
Applications	IHC
Species Reactivity	Hu
Specificity	The antibody detects endogenous levels of total COPS6 protein.
Immunogen Type	protein
Immunogen Description	Full length fusion protein
Target Name	COPS6
Other Names	CSN6; MOV34-34KD
Accession No.	Swiss-Prot#:Q7L5N1NCBI Gene ID:10980Gene Accssion:BC002520
Uniprot	Q7L5N1
GeneID	10980;
Concentration	0.6mg/ml
Formulation	Rabbit IgG in pH7.4 PBS, 0.05% NaN ₃ , 40% Glycerol.
Storage	Store at -20C

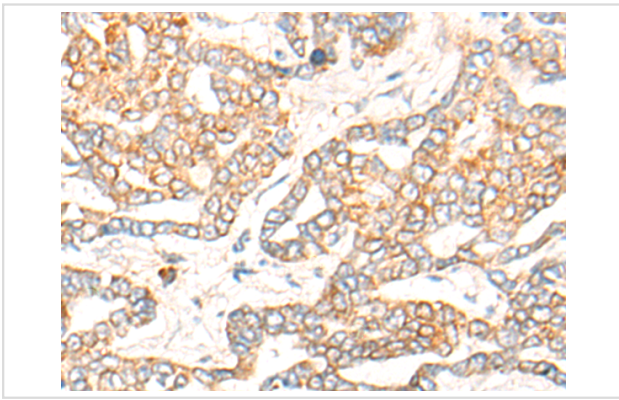
Application Details

Immunofluorescence:1: 20-100

Images



The image is immunohistochemistry of paraffin-embedded Human esophagus cancer tissue using 46970(COPS6 Antibody) at dilution 1/20. (Original magnification: ?00)



The image is immunohistochemistry of paraffin-embedded Human liver cancer tissue using 46970(COPS6 Antibody) at dilution 1/20. (Original magnification: 200)

Background

The protein encoded by this gene is one of the eight subunits of COP9 signalosome, a highly conserved protein complex that functions as an important regulator in multiple signaling pathways. The structure and function of COP9 signalosome is similar to that of the 19S regulatory particle of 26S proteasome. COP9 signalosome has been shown to interact with SCF-type E3 ubiquitin ligases and act as a positive regulator of E3 ubiquitin ligases. This protein belongs to translation initiation factor 3 (eIF3) superfamily. It is involved in the regulation of cell cycle and likely to be a cellular cofactor for HIV-1 accessory gene product Vpr.?

Note: This product is for in vitro research use only