

CPSF1 Antibody

Catalog No: #46983

Orders: order@signalwayantibody.comSupport: tech@signalwayantibody.com

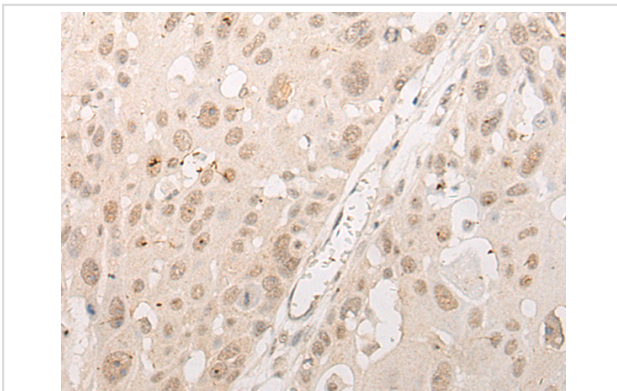
Description

Product Name	CPSF1 Antibody
Host Species	Rabbit
Clonality	Polyclonal
Purification	Antigen affinity purification
Applications	IHC
Species Reactivity	Hu
Specificity	The antibody detects endogenous levels of total CPSF1 protein.
Immunogen Type	protein
Immunogen Description	Fusion protein of human CPSF1
Target Name	CPSF1
Other Names	CPSF160; P/cl.18; HSU37012
Accession No.	Swiss-Prot#:Q10570NCBI Gene ID:29894Gene Accssion:BC017232
Uniprot	Q10570
GeneID	29894;
Concentration	0.2mg/ml
Formulation	Rabbit IgG in pH7.4 PBS, 0.05% NaN ₃ , 40% Glycerol.
Storage	Store at -20C

Application Details

Immunofluorescence:1: 20-100

Images



The image is immunohistochemistry of paraffin-embedded Human esophagus cancer tissue using 46983(CPSF1 Antibody) at dilution 1/20. (Original magnification: ?00)

Background

Cleavage and polyadenylation specificity factor (CPSF) is a multisubunit complex that plays a central role in 3-prime processing of pre-mRNAs. CPSF recognizes the AAUAAA signal in the pre-mRNA and interacts with other proteins to facilitate both RNA cleavage and poly(A) synthesis. CPSF1 is the largest subunit of the CPSF complex (Murthy and Manley, 1995 [PubMed 7590244]).

Note: This product is for in vitro research use only