

CPSF3L Antibody

Catalog No: #46985

Orders: order@signalwayantibody.comSupport: tech@signalwayantibody.com

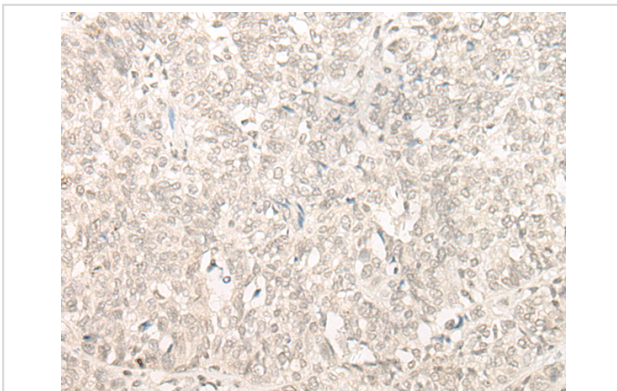
Description

Product Name	CPSF3L Antibody
Host Species	Rabbit
Clonality	Polyclonal
Purification	Antigen affinity purification
Applications	IHC
Species Reactivity	Hu
Specificity	The antibody detects endogenous levels of total CPSF3L protein.
Immunogen Type	protein
Immunogen Description	Fusion protein of human CPSF3L
Target Name	CPSF3L
Other Names	RC68; INT11; RC-68; INTS11; CPSF73L
Accession No.	Swiss-Prot#:Q5TA45NCBI Gene ID:54973Gene Accssion:BC013904
Uniprot	Q5TA45
GeneID	54973;
Concentration	0.9mg/ml
Formulation	Rabbit IgG in pH7.4 PBS, 0.05% NaN ₃ , 40% Glycerol.
Storage	Store at -20C

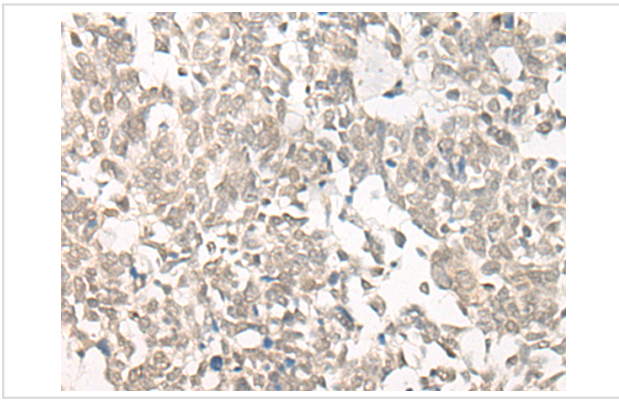
Application Details

Immunofluorescence:1: 25-100

Images



The image is immunohistochemistry of paraffin-embedded Human ovarian cancer tissue using 46985(CPSF3L Antibody) at dilution 1/25. (Original magnification: ?00)



The image is immunohistochemistry of paraffin-embedded Human lung cancer tissue using 46985(CPSF3L Antibody) at dilution 1/25. (Original magnification: 200)

Background

The Integrator complex contains at least 12 subunits and associates with the C-terminal domain of RNA polymerase II large subunit (POLR2A; MIM 180660) and mediates the 3-prime end processing of small nuclear RNAs U1 (RNU1; MIM 180680) and U2 (RNU2; MIM 180690). INTS11, or CPSF3L, is the catalytic subunit of the Integrator complex (Baillat et al., 2005 [PubMed 16239144]).

Note: This product is for in vitro research use only