

CPVL Antibody

Catalog No: #46986

Orders: order@signalwayantibody.comSupport: tech@signalwayantibody.com

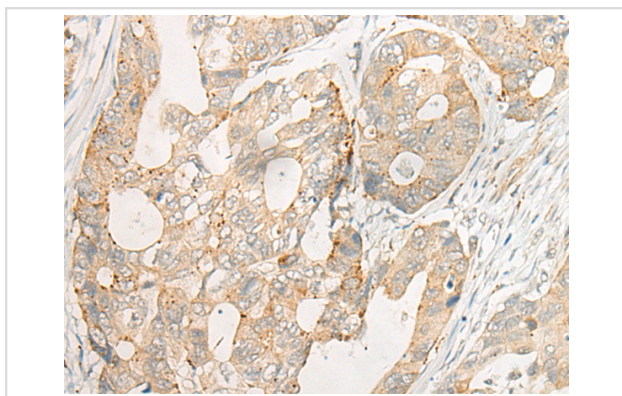
Description

Product Name	CPVL Antibody
Host Species	Rabbit
Clonality	Polyclonal
Purification	Antigen affinity purification
Applications	WB, IHC
Species Reactivity	Hu
Specificity	The antibody detects endogenous levels of total CPVL protein.
Immunogen Type	protein
Immunogen Description	Fusion protein of human CPVL
Target Name	CPVL
Other Names	HVLP
Accession No.	Swiss-Prot#:Q9H3G5NCBI Gene ID:54504Gene Accssion:BC016838
Uniprot	Q9H3G5
GeneID	54504;
Calculated MW	54 kDa
Concentration	1.1mg/ml
Formulation	Rabbit IgG in pH7.4 PBS, 0.05% NaN ₃ , 40% Glycerol.
Storage	Store at -20C

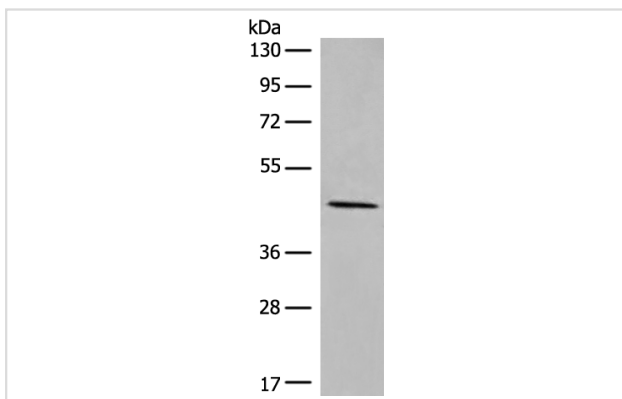
Application Details

Western blotting:1:200-1000Immunofluorescence:1: 25-100

Images



The image is immunohistochemistry of paraffin-embedded Human gastric cancer tissue using 46986(CPVL Antibody) at dilution 1/30. (Original magnification: ?00)



Gel: 8%SDS-PAGE
Lysate: 40 µg, Lane: Human kidney tissue lysate
Primary antibody: CPVL Antibody at dilution 1/450
Secondary antibody: Goat anti rabbit IgG at 1/8000 dilution
Exposure time: 2 minutes

Background

The protein encoded by this gene is a carboxypeptidase and bears strong sequence similarity to serine carboxypeptidases. Carboxypeptidases are a large class of proteases that act to cleave a single amino acid from the carboxy termini of proteins or peptides. The exact function of this protein, however, has not been determined. At least two alternatively spliced transcripts which encode the same protein have been observed.?

Note: This product is for in vitro research use only