

VLDLR Antibody

Catalog No: #40292

Orders: order@signalwayantibody.comSupport: tech@signalwayantibody.com

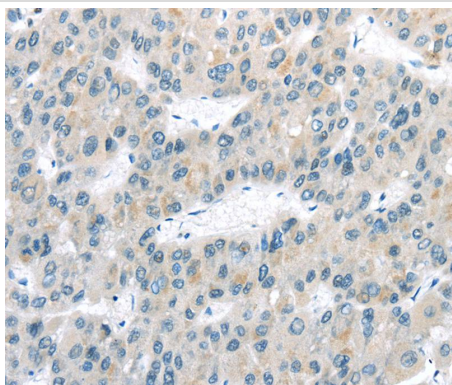
Description

| | |
|-----------------------|--|
| Product Name | VLDLR Antibody |
| Host Species | Rabbit |
| Clonality | Polyclonal |
| Purification | Antigen affinity purification. |
| Applications | IHC |
| Species Reactivity | Hu |
| Specificity | The antibody detects endogenous levels of total VLDLR protein. |
| Immunogen Type | Peptide |
| Immunogen Description | Synthetic peptide of human very low density lipoprotein receptor |
| Target Name | VLDLR |
| Other Names | CARMQ1; CHRMQ1; VLDLRCH |
| Accession No. | Swiss-Prot:P98155 Gene Accssion:NP_003374 |
| Uniprot | P98155 |
| GeneID | 7436; |
| Concentration | 2.7mg/ml |
| Formulation | Rabbit IgG in pH7.4 PBS, 0.05% NaN ₃ , 40% Glycerol. |
| Storage | Store at -20°C |

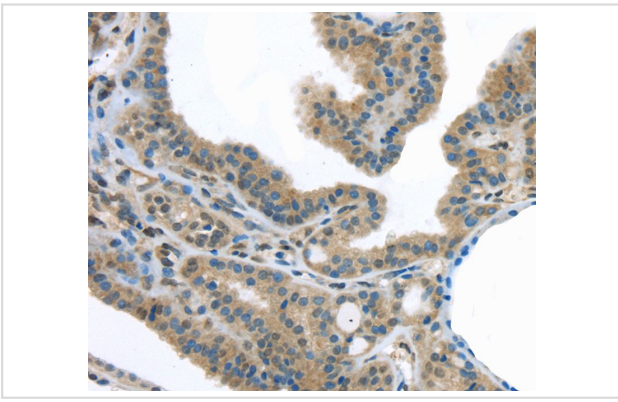
Application Details

Immunohistochemistry:1:30-1:150

Images



Immunohistochemical analysis of paraffin-embedded Human liver cancer tissue using #40292 at dilution 1/40.



Immunohistochemical analysis of paraffin-embedded Human thyroid cancer tissue using #40292 at dilution 1/40.

Background

The low density lipoprotein receptor (LDLR) gene family consists of cell surface proteins involved in receptor-mediated endocytosis of specific ligands. This gene encodes a lipoprotein receptor that is a member of the LDLR family and plays important roles in VLDL-triglyceride metabolism and the reelin signaling pathway. Mutations in this gene cause VLDLR-associated cerebellar hypoplasia. Alternative splicing generates multiple transcript variants encoding distinct isoforms for this gene.?

Note: This product is for in vitro research use only