

## CR1L Antibody

Catalog No: #46987

Orders: [order@signalwayantibody.com](mailto:order@signalwayantibody.com)Support: [tech@signalwayantibody.com](mailto:tech@signalwayantibody.com)

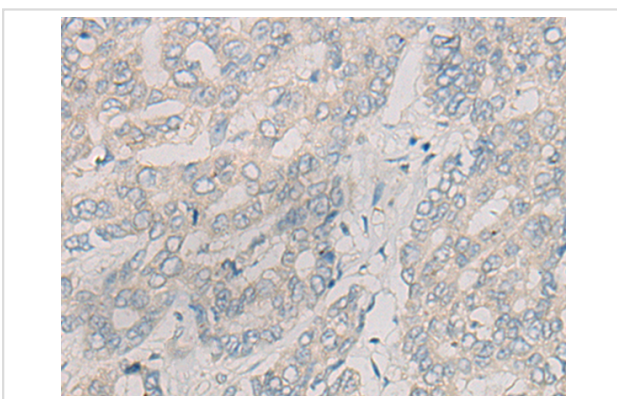
## Description

Product Name	CR1L Antibody
Host Species	Rabbit
Clonality	Polyclonal
Purification	Antigen affinity purification
Applications	IHC
Species Reactivity	Hu
Specificity	The antibody detects endogenous levels of total CR1L protein.
Immunogen Type	peptide
Immunogen Description	Synthetic peptide of human CR1L
Target Name	CR1L
Accession No.	Swiss-Prot#:Q2VPA4 NCBI Gene ID:1379Gene Accssion:NP_783641
Uniprot	Q2VPA4
GeneID	1379;
Concentration	1.5mg/ml
Formulation	Rabbit IgG in pH7.4 PBS, 0.05% NaN <sub>3</sub> , 40% Glycerol.
Storage	Store at -20C

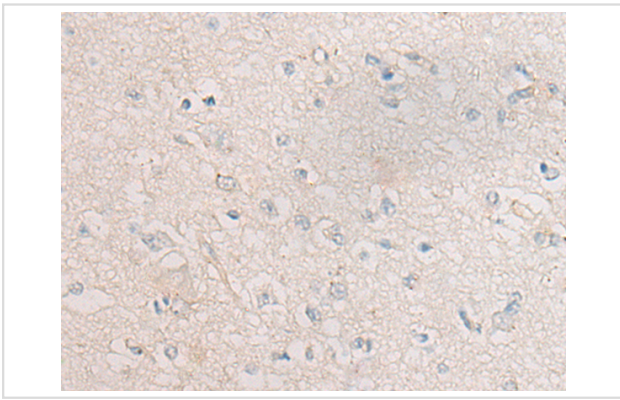
## Application Details

Immunofluorescence: 1: 25-100

## Images



The image is immunohistochemistry of paraffin-embedded Human liver cancer tissue using 46987(CR1L Antibody) at dilution 1/45. (Original magnification: 200)



The image is immunohistochemistry of paraffin-embedded Human brain tissue using 46987(CR1L Antibody) at dilution 1/45. (Original magnification: ?00)

## Background

The C3b/C4b receptor (CR1;?120620) is important in immune complex processing. On phagocytic cells it promotes the adherence and sometimes the endocytosis of C3b- and C4b-coated particles. CR1 is composed largely of a tandemly repeated motif of approximately 60 amino acids, the short consensus repeat (SCR).

Note: This product is for in vitro research use only