

CRAT Antibody

Catalog No: #46988

Orders: order@signalwayantibody.comSupport: tech@signalwayantibody.com

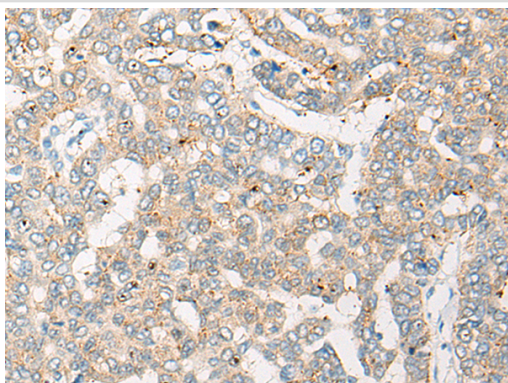
Description

Product Name	CRAT Antibody
Host Species	Rabbit
Clonality	Polyclonal
Purification	Antigen affinity purification
Applications	WB, IHC
Species Reactivity	Hu
Specificity	The antibody detects endogenous levels of total CRAT protein.
Immunogen Type	protein
Immunogen Description	Fusion protein of human CRAT
Target Name	CRAT
Other Names	CAT1
Accession No.	Swiss-Prot#:P43155NCBI Gene ID:1384Gene Accssion:BC000723
Uniprot	P43155
GeneID	1384;
Calculated MW	71 kDa
Concentration	0.3mg/ml
Formulation	Rabbit IgG in pH7.4 PBS, 0.05% NaN ₃ , 40% Glycerol.
Storage	Store at -20C

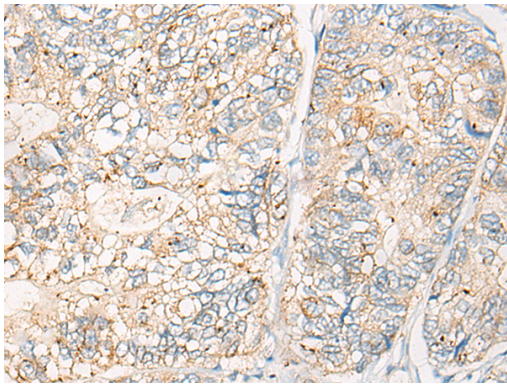
Application Details

Western blotting:1:200-1000Immunofluorescence:1: 20-100

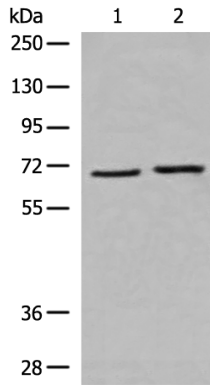
Images



The image is immunohistochemistry of paraffin-embedded Human liver cancer tissue using 46988(CRAT Antibody) at dilution 1/20. (Original magnification: ?00)



The image is immunohistochemistry of paraffin-embedded Human gastric cancer tissue using 46988(CRAT Antibody) at dilution 1/20. (Original magnification: 200)



Gel: 8%SDS-PAGE
Lysate: 40 µg, Lane 1-2: A549 cell and Human heart tissue lysates
Primary antibody:CRAT Antibody at dilution 1/200
Secondary antibody: Goat anti rabbit IgG at 1/8000 dilution
Exposure time: 20 seconds

Background

This gene encodes carnitine acetyltransferase (CRAT), which is a key enzyme in the metabolic pathway in mitochondria, peroxisomes and endoplasmic reticulum. CRAT catalyzes the reversible transfer of acyl groups from an acyl-CoA thioester to carnitine and regulates the ratio of acylCoA/CoA in the subcellular compartments. Two transcript variants encoding different isoforms have been found for this gene.

Note: This product is for in vitro research use only