

CRB3 Antibody

Catalog No: #46989

Orders: order@signalwayantibody.comSupport: tech@signalwayantibody.com

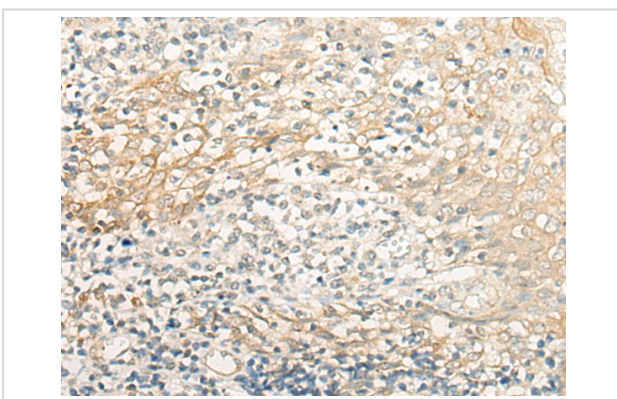
Description

Product Name	CRB3 Antibody
Host Species	Rabbit
Clonality	Polyclonal
Purification	Antigen affinity purification
Applications	IHC
Species Reactivity	Hu
Specificity	The antibody detects endogenous levels of total CRB3 protein.
Immunogen Type	protein
Immunogen Description	Fusion protein of human CRB3
Target Name	CRB3
Accession No.	Swiss-Prot#:Q9BUF7NCBI Gene ID:92359Gene Accssion:BC018409
Uniprot	Q9BUF7
GeneID	92359;
Concentration	1.1mg/ml
Formulation	Rabbit IgG in pH7.4 PBS, 0.05% NaN ₃ , 40% Glycerol.
Storage	Store at -20C

Application Details

Immunofluorescence:1: 25-100

Images



The image is immunohistochemistry of paraffin-embedded Human tonsil tissue using 46989(CRB3 Antibody) at dilution 1/30. (Original magnification: ?00)

Background

This gene encodes a member of the Crumbs family of proteins. This gene is widely expressed in epithelial tissues where the encoded protein isoforms play various roles such as the control of cytokinesis and ciliogenesis or the formation of tight junctions. Alternative splicing results in multiple transcript variants encoding different isoforms.

Note: This product is for in vitro research use only