

CSNK1G1 Antibody

Catalog No: #46992

Orders: order@signalwayantibody.comSupport: tech@signalwayantibody.com

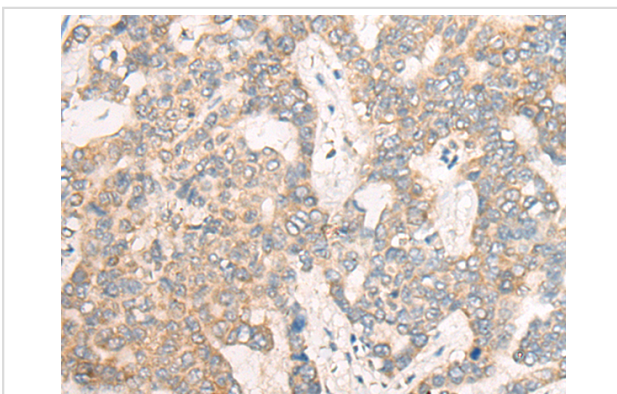
Description

Product Name	CSNK1G1 Antibody
Host Species	Rabbit
Clonality	Polyclonal
Purification	Antigen affinity purification
Applications	IHC
Species Reactivity	Hu
Specificity	The antibody detects endogenous levels of total CSNK1G1 protein.
Immunogen Type	peptide
Immunogen Description	Synthetic peptide of human CSNK1G1
Target Name	CSNK1G1
Other Names	CK1gamma1
Accession No.	Swiss-Prot#:Q9HCP0 NCBI Gene ID:53944 Gene Accssion:NP_071331
Uniprot	Q9HCP0
GeneID	53944;
Concentration	1.5mg/ml
Formulation	Rabbit IgG in pH7.4 PBS, 0.05% NaN ₃ , 40% Glycerol.
Storage	Store at -20C

Application Details

Immunofluorescence:1: 25-100

Images



The image is immunohistochemistry of paraffin-embedded Human liver cancer tissue using 46992(CSNK1G1 Antibody) at dilution 1/35. (Original magnification: ?00)

Background

This gene encodes a member of the casein kinase I gene family. This family is comprised of serine/threonine kinases that phosphorylate acidic proteins such as caseins. The encoded kinase plays a role in cell cycle checkpoint arrest in response to stalled replication forks by phosphorylating Claspin. A mutation in this gene may be associated with non-syndromic early-onset epilepsy (NSEOE).

Note: This product is for in vitro research use only