

## CTNND2 Antibody

Catalog No: #46993

Orders: [order@signalwayantibody.com](mailto:order@signalwayantibody.com)Support: [tech@signalwayantibody.com](mailto:tech@signalwayantibody.com)

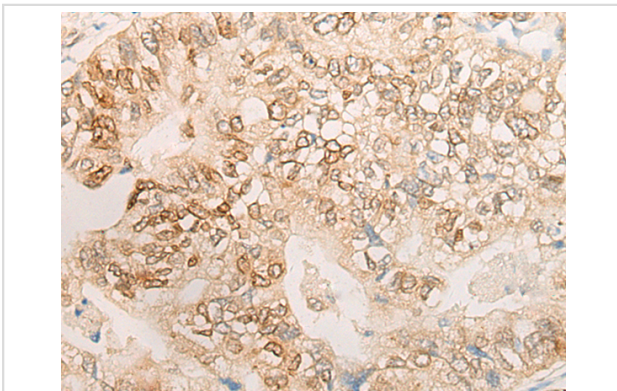
## Description

Product Name	CTNND2 Antibody
Host Species	Rabbit
Clonality	Polyclonal
Purification	Antigen affinity purification
Applications	IHC
Species Reactivity	Hu
Specificity	The antibody detects endogenous levels of total CTNND2 protein.
Immunogen Type	peptide
Immunogen Description	Synthetic peptide of human CTNND2
Target Name	CTNND2
Other Names	GT24; NPRAP
Accession No.	Swiss-Prot#:Q9UQB3NCBI Gene ID:1501Gene Accssion:NP_001323
Uniprot	Q9UQB3
GeneID	1501;
Concentration	0.4mg/ml
Formulation	Rabbit IgG in pH7.4 PBS, 0.05% NaN <sub>3</sub> , 40% Glycerol.
Storage	Store at -20C

## Application Details

Immunofluorescence:1: 20-100

## Images



The image is immunohistochemistry of paraffin-embedded Human gastric cancer tissue using 46993(CTNND2 Antibody) at dilution 1/20. (Original magnification: ?00)

## Background

This gene encodes an adhesive junction associated protein of the armadillo/beta-catenin superfamily and is implicated in brain and eye development and cancer formation. The protein encoded by this gene promotes the disruption of E-cadherin based adherens junction to favor cell spreading upon stimulation by hepatocyte growth factor. This gene is overexpressed in prostate adenocarcinomas and is associated with decreased expression of tumor suppressor E-cadherin in this tissue. This gene resides in a region of the short arm of chromosome 5 that is deleted in Cri du Chat syndrome.

Alternative splicing results in multiple transcript variants encoding different isoforms.

---

Note: This product is for in vitro research use only