

## CWF19L1 Antibody

Catalog No: #46996

Orders: [order@signalwayantibody.com](mailto:order@signalwayantibody.com)Support: [tech@signalwayantibody.com](mailto:tech@signalwayantibody.com)

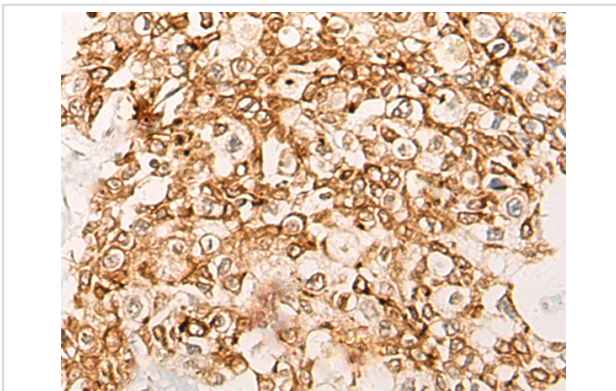
## Description

Product Name	CWF19L1 Antibody
Host Species	Rabbit
Clonality	Polyclonal
Purification	Antigen affinity purification
Applications	IHC
Species Reactivity	Hu
Specificity	The antibody detects endogenous levels of total CWF19L1 protein.
Immunogen Type	protein
Immunogen Description	Fusion protein of human CWF19L1
Target Name	CWF19L1
Other Names	C19L1; hDm1; SCAR17
Accession No.	Swiss-Prot#:Q69YN2NCBI Gene ID:55280Gene Accssion:BC008746
Uniprot	Q69YN2
GeneID	55280;
Concentration	0.5mg/ml
Formulation	Rabbit IgG in pH7.4 PBS, 0.05% NaN <sub>3</sub> , 40% Glycerol.
Storage	Store at -20C

## Application Details

Immunofluorescence:1: 20-100

## Images



The image is immunohistochemistry of paraffin-embedded Human prostate cancer tissue using 46996(CWF19L1 Antibody) at dilution 1/20. (Original magnification: ?00)

## Background

This gene encodes a member of the CWF19 protein family. Mutations in this gene have been associated with autosomal recessive spinocerebellar ataxia-17 and mild mental retardation. Alternative splicing results in multiple transcript variants.?

---

Note: This product is for in vitro research use only