

CYB5D1 Antibody

Catalog No: #46997

Orders: order@signalwayantibody.comSupport: tech@signalwayantibody.com

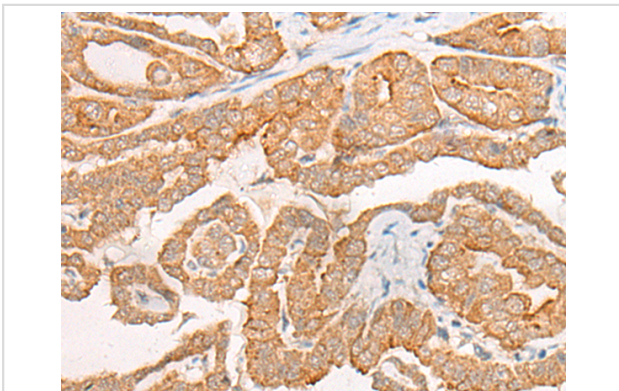
Description

Product Name	CYB5D1 Antibody
Host Species	Rabbit
Clonality	Polyclonal
Purification	Antigen affinity purification
Applications	WB, IHC
Species Reactivity	Hu
Specificity	The antibody detects endogenous levels of total CYB5D1 protein.
Immunogen Type	peptide
Immunogen Description	Synthetic peptide of human CYB5D1
Target Name	CYB5D1
Accession No.	Swiss-Prot#:Q6P9G0NCBI Gene ID:124637Gene Accssion:NP_653208
Uniprot	Q6P9G0
GeneID	124637;
Calculated MW	27 kDa
Concentration	1.4mg/ml
Formulation	Rabbit IgG in pH7.4 PBS, 0.05% NaN3, 40% Glycerol.
Storage	Store at -20C

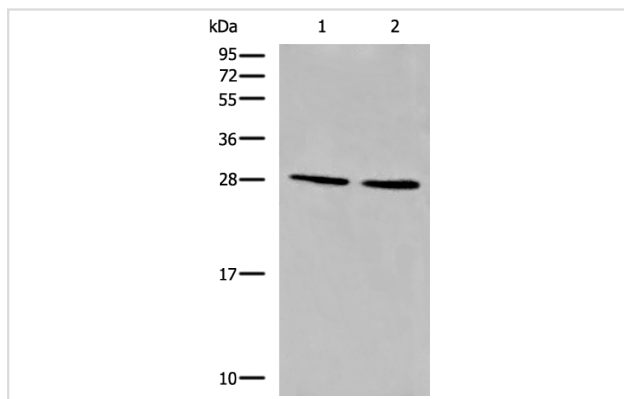
Application Details

Western blotting:1:500-2000Immunofluorescence:1: 40-200

Images



The image is immunohistochemistry of paraffin-embedded Human thyroid cancer tissue using 46997(CYB5D1 Antibody) at dilution 1/45. (Original magnification: ?00)



Gel: 12%SDS-PAGE
Lysate: 40 µg, Lane 1-2: LOVO and 231 cell lysates
Primary antibody:CYB5D1 Antibody at dilution 1/650
Secondary antibody: Goat anti rabbit IgG at 1/8000 dilution
Exposure time: 30 seconds

Background

CYB5D1 belongs to the cytochrome b5 family and contains 1 cytochrome b5 heme-binding domain. Cytochromes b5 are ubiquitous electron transport proteins found in animals, plants and yeasts. There are 2 named isoforms produced by alternative splicing.

Note: This product is for in vitro research use only