

## CYFIP1 Antibody

Catalog No: #47000

Orders: [order@signalwayantibody.com](mailto:order@signalwayantibody.com)Support: [tech@signalwayantibody.com](mailto:tech@signalwayantibody.com)

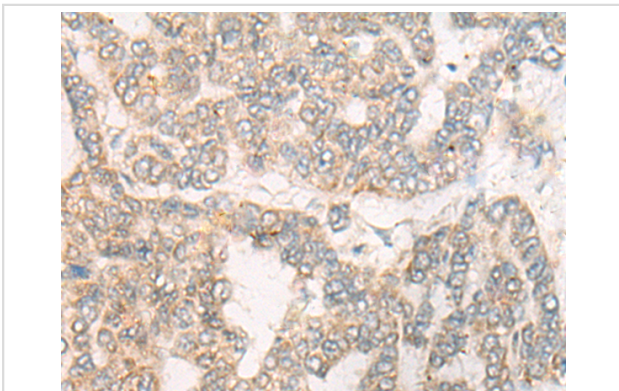
## Description

Product Name	CYFIP1 Antibody
Host Species	Rabbit
Clonality	Polyclonal
Purification	Antigen affinity purification
Applications	IHC
Species Reactivity	Hu
Specificity	The antibody detects endogenous levels of total CYFIP1 protein.
Immunogen Type	protein
Immunogen Description	Fusion protein of human CYFIP1
Target Name	CYFIP1
Other Names	SHYC; SRA1; SRA-1; P140SRA-1
Accession No.	Swiss-Prot#:Q7L576NCBI Gene ID:23191Gene Accssion:BC005097
Uniprot	Q7L576
GeneID	23191;
Concentration	0.8mg/ml
Formulation	Rabbit IgG in pH7.4 PBS, 0.05% NaN <sub>3</sub> , 40% Glycerol.
Storage	Store at -20C

## Application Details

Immunofluorescence:1: 25-100

## Images



The image is immunohistochemistry of paraffin-embedded Human liver cancer tissue using 47000(CYFIP1 Antibody) at dilution 1/30. (Original magnification: 200)

## Background

Component of the CYFIP1-EIF4E-FMR1 complex which binds to the mRNA cap and mediates translational repression. In the CYFIP1-EIF4E-FMR1 complex this subunit is an adapter between EIF4E and FMR1. Promotes the translation repression activity of FMR1 in brain probably by mediating its association with EIF4E and mRNA (By similarity). Regulates formation of membrane ruffles and lamellipodia. Plays a role in axon outgrowth. Binds to F-actin but not to RNA. Part of the WAVE complex that regulates actin filament reorganization via its interaction with the Arp2/3 complex. Actin

remodeling activity is regulated by RAC1. Regulator of epithelial morphogenesis. May act as an invasion suppressor in cancers.

---

Note: This product is for in vitro research use only