

CYP26B1 Antibody

Catalog No: #47001

Orders: order@signalwayantibody.comSupport: tech@signalwayantibody.com

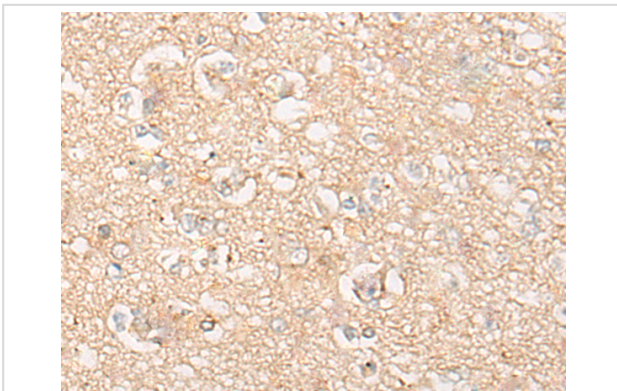
Description

Product Name	CYP26B1 Antibody
Host Species	Rabbit
Clonality	Polyclonal
Purification	Antigen affinity purification
Applications	IHC
Species Reactivity	Hu
Specificity	The antibody detects endogenous levels of total CYP26B1 protein.
Immunogen Type	protein
Immunogen Description	Fusion protein of human CYP26B1
Target Name	CYP26B1
Other Names	RHFCA; CYP26A2; P450RAI2; P450RAI-2
Accession No.	Swiss-Prot#:Q9NR63NCBI Gene ID:56603Gene Accssion:BC069443
Uniprot	Q9NR63
GeneID	56603;
Concentration	0.7mg/ml
Formulation	Rabbit IgG in pH7.4 PBS, 0.05% NaN ₃ , 40% Glycerol.
Storage	Store at -20C

Application Details

Immunofluorescence:1: 20-100

Images



The image is immunohistochemistry of paraffin-embedded Human brain tissue using 47001(CYP26B1 Antibody) at dilution 1/20. (Original magnification: ?00)

Background

This gene encodes a member of the cytochrome P450 superfamily. The cytochrome P450 proteins are monooxygenases which catalyze many reactions involved in drug metabolism and synthesis of cholesterol, steroids and other lipids. The encoded protein is localized to the endoplasmic reticulum, and functions as a critical regulator of all-trans retinoic acid levels by the specific inactivation of all-trans retinoic acid to hydroxylated forms. Mutations in this gene are associated with radiohumeral fusions and other skeletal and craniofacial anomalies, and increased levels of the encoded

protein are associated with atherosclerotic lesions. Alternative splicing results in multiple transcript variants.?

Note: This product is for in vitro research use only