

CYP26C1 Antibody

Catalog No: #47002

Orders: order@signalwayantibody.comSupport: tech@signalwayantibody.com

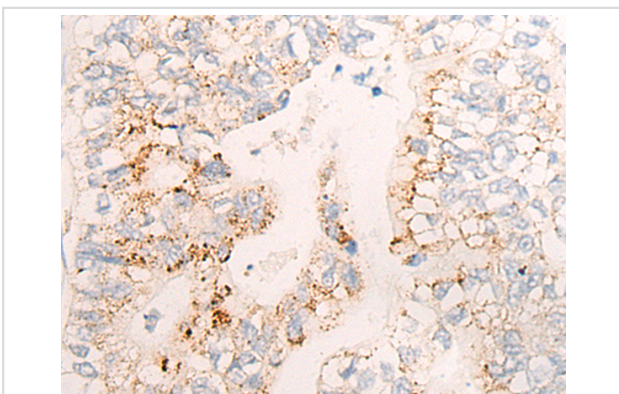
Description

Product Name	CYP26C1 Antibody
Host Species	Rabbit
Clonality	Polyclonal
Purification	Antigen affinity purification
Applications	IHC
Species Reactivity	Hu
Specificity	The antibody detects endogenous levels of total CYP26C1 protein.
Immunogen Type	peptide
Immunogen Description	Synthetic peptide of human CYP26C1
Target Name	CYP26C1
Other Names	FFDD4
Accession No.	Swiss-Prot#:Q6V0L0NCBI Gene ID:340665Gene Accssion:NP_899230
Uniprot	Q6V0L0
GeneID	340665;
Concentration	0.3mg/ml
Formulation	Rabbit IgG in pH7.4 PBS, 0.05% NaN3, 40% Glycerol.
Storage	Store at -20C

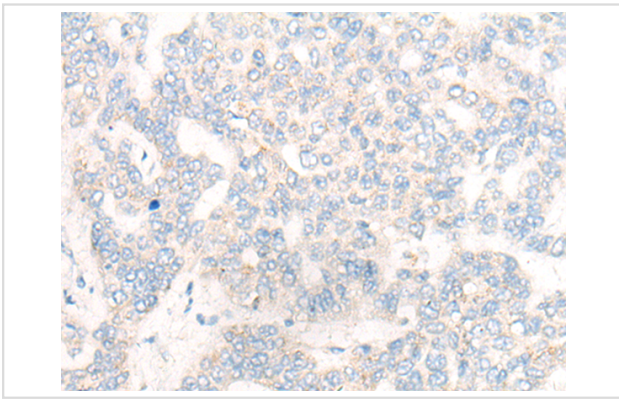
Application Details

Immunofluorescence:1: 20-100

Images



The image is immunohistochemistry of paraffin-embedded Human gastric cancer tissue using 47002(CYP26C1 Antibody) at dilution 1/20. (Original magnification: ?00)



The image is immunohistochemistry of paraffin-embedded Human liver cancer tissue using 47002(CYP26C1 Antibody) at dilution 1/20. (Original magnification: 200)

Background

This gene encodes a member of the cytochrome P450 superfamily of enzymes. The cytochrome P450 proteins are monooxygenases which catalyze many reactions involved in drug metabolism and synthesis of cholesterol, steroids and other lipids. This enzyme is involved in the catabolism of all-trans- and 9-cis-retinoic acid, and thus contributes to the regulation of retinoic acid levels in cells and tissues. This gene is adjacent to a related gene on chromosome 10q23.33.

Note: This product is for in vitro research use only