

CYP3A5 Antibody

Catalog No: #47007

Orders: order@signalwayantibody.comSupport: tech@signalwayantibody.com

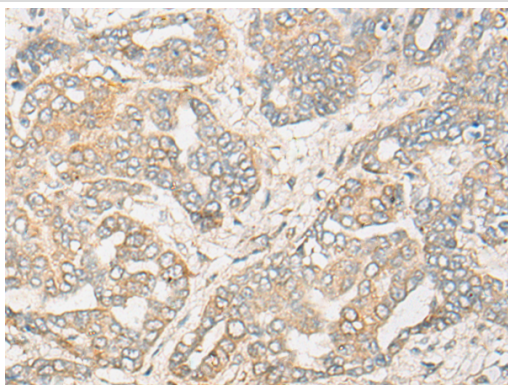
Description

Product Name	CYP3A5 Antibody
Host Species	Rabbit
Clonality	Polyclonal
Purification	Antigen affinity purification
Applications	IHC
Species Reactivity	Hu
Specificity	The antibody detects endogenous levels of total CYP3A5 protein.
Immunogen Type	peptide
Immunogen Description	Synthetic peptide of human CYP3A5
Target Name	CYP3A5
Other Names	CP35; PCN3; CYP11A5; P450PCN3
Accession No.	Swiss-Prot#:P20815 NCBI Gene ID:1577Gene Accssion:NP_000768
Uniprot	P20815
GeneID	1577;
Concentration	1mg/ml
Formulation	Rabbit IgG in pH7.4 PBS, 0.05% NaN ₃ , 40% Glycerol.
Storage	Store at -20C

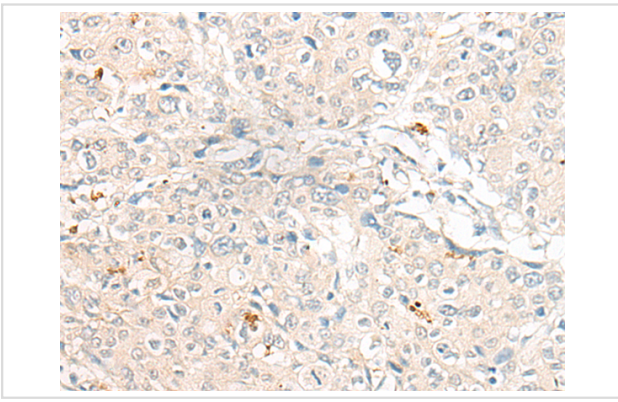
Application Details

Immunofluorescence:1: 20-100

Images



The image is immunohistochemistry of paraffin-embedded Human liver cancer tissue using 47007(CYP3A5 Antibody) at dilution 1/25. (Original magnification: 200)



The image is immunohistochemistry of paraffin-embedded Human prostate cancer tissue using 47007(CYP3A5 Antibody) at dilution 1/25. (Original magnification: ?00)

Background

This gene encodes a member of the cytochrome P450 superfamily of enzymes. The cytochrome P450 proteins are monooxygenases which catalyze many reactions involved in drug metabolism and synthesis of cholesterol, steroids and other lipids. The encoded protein metabolizes drugs as well as the steroid hormones testosterone and progesterone. This gene is part of a cluster of cytochrome P450 genes on chromosome 7q21.1. Two pseudogenes of this gene have been identified within this cluster on chromosome 7. Expression of this gene is widely variable among populations, and a single nucleotide polymorphism that affects transcript splicing has been associated with susceptibility to hypertension. Alternative splicing results in multiple transcript variants.?

Note: This product is for in vitro research use only