

CYP4X1 Antibody

Catalog No: #47009

Orders: order@signalwayantibody.comSupport: tech@signalwayantibody.com

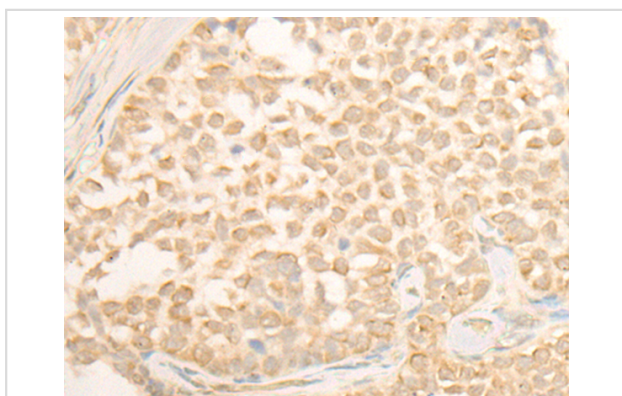
Description

Product Name	CYP4X1 Antibody
Host Species	Rabbit
Clonality	Polyclonal
Purification	Antigen affinity purification
Applications	IHC
Species Reactivity	Hu
Specificity	The antibody detects endogenous levels of total CYP4X1 protein.
Immunogen Type	protein
Immunogen Description	Fusion protein of human CYP4X1
Target Name	CYP4X1
Other Names	CYPIVX1
Accession No.	Swiss-Prot#:Q8N118NCBI Gene ID:260293Gene Accssion:BC028102
Uniprot	Q8N118
GeneID	260293;
Concentration	1.3mg/ml
Formulation	Rabbit IgG in pH7.4 PBS, 0.05% NaN ₃ , 40% Glycerol.
Storage	Store at -20C

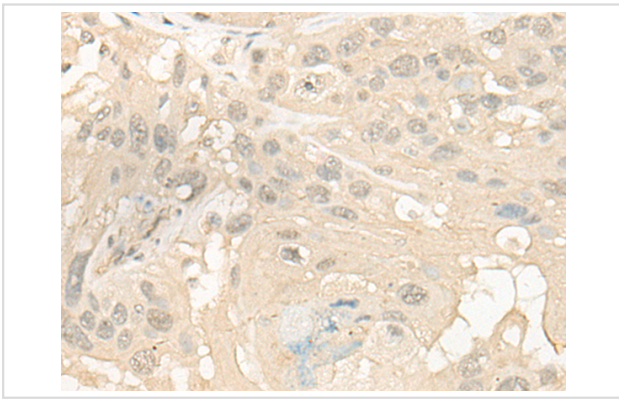
Application Details

Immunofluorescence:1: 40-200

Images



The image is immunohistochemistry of paraffin-embedded Human ovarian cancer tissue using 47009(CYP4X1 Antibody) at dilution 1/40. (Original magnification: ?00)



The image is immunohistochemistry of paraffin-embedded Human esophagus cancer tissue using 47009(CYP4X1 Antibody) at dilution 1/40. (Original magnification: ?00)

Background

This gene encodes a member of the cytochrome P450 superfamily of enzymes and is located within a cluster of genes belonging to this superfamily on chromosome 1. The cytochrome P450 proteins are monooxygenases which catalyze many reactions involved in drug metabolism and synthesis of cholesterol, steroids and other lipids. The expression pattern of a similar rat protein suggests that this protein may be involved in neurovascular function in the brain. Alternative splicing results in multiple transcript variants.

Note: This product is for in vitro research use only