

## CYSLTR2 Antibody

Catalog No: #47011

Orders: [order@signalwayantibody.com](mailto:order@signalwayantibody.com)Support: [tech@signalwayantibody.com](mailto:tech@signalwayantibody.com)

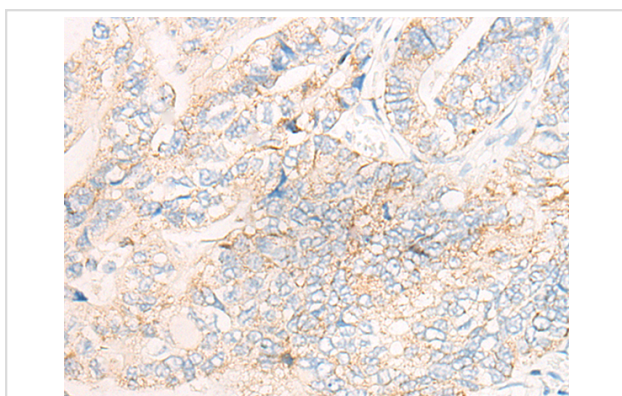
## Description

Product Name	CYSLTR2 Antibody
Host Species	Rabbit
Clonality	Polyclonal
Purification	Antigen affinity purification
Applications	WB, IHC
Species Reactivity	Hu
Specificity	The antibody detects endogenous levels of total CYSLTR2 protein.
Immunogen Type	peptide
Immunogen Description	Synthetic peptide of human CYSLTR2
Target Name	CYSLTR2
Other Names	HG57; CYSLT2; GPCR21; HPN321; CYSLT2R; KPG_011; hGPCR21; PSEC0146
Accession No.	Swiss-Prot#:Q9NS75NCBI Gene ID:57105Gene Accssion:NP_065110
Uniprot	Q9NS75
GeneID	57105;
Calculated MW	40 kDa
Concentration	0.5mg/ml
Formulation	Rabbit IgG in pH7.4 PBS, 0.05% NaN <sub>3</sub> , 40% Glycerol.
Storage	Store at -20C

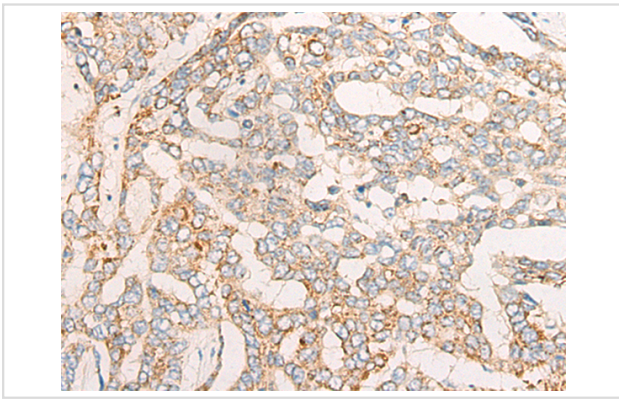
## Application Details

Western blotting:1:200-1000Immunofluorescence:1: 20-100

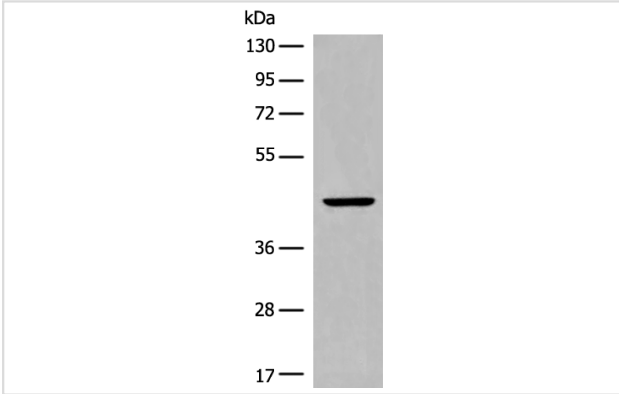
## Images



The image is immunohistochemistry of paraffin-embedded Human gastric cancer tissue using 47011(CYSLTR2 Antibody) at dilution 1/20. (Original magnification: ?00)



The image is immunohistochemistry of paraffin-embedded Human liver cancer tissue using 47011(CYSLTR2 Antibody) at dilution 1/20. (Original magnification: ?00)



Gel: 8%SDS-PAGE  
Lysate: 40 µg, Lane: Mouse adrenal gland tissue lysate  
Primary antibody:CYSLTR2 Antibody at dilution 1/300  
Secondary antibody: Goat anti rabbit IgG at 1/8000 dilution  
Exposure time: 40 seconds

## Background

The cysteinyl leukotrienes LTC<sub>4</sub>, LTD<sub>4</sub>, and LTE<sub>4</sub> are important mediators of human bronchial asthma. Pharmacologic studies have determined that cysteinyl leukotrienes activate at least 2 receptors, the protein encoded by this gene and CYSLTR1. This encoded receptor is a member of the superfamily of G protein-coupled receptors. It seems to play a major role in endocrine and cardiovascular systems.

Note: This product is for in vitro research use only