

## CYTH3 Antibody

Catalog No: #47012

Orders: [order@signalwayantibody.com](mailto:order@signalwayantibody.com)Support: [tech@signalwayantibody.com](mailto:tech@signalwayantibody.com)

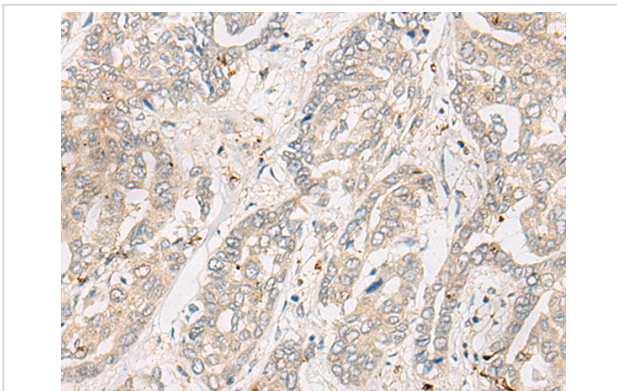
## Description

Product Name	CYTH3 Antibody
Host Species	Rabbit
Clonality	Polyclonal
Purification	Antigen affinity purification
Applications	IHC
Species Reactivity	Hu
Specificity	The antibody detects endogenous levels of total CYTH3 protein.
Immunogen Type	protein
Immunogen Description	Fusion protein of human CYTH3
Target Name	CYTH3
Other Names	GRP1; ARNO3; PSCD3; cytohesin-3
Accession No.	Swiss-Prot#:O43739NCBI Gene ID:9265Gene Accssion:BC008191
Uniprot	O43739
GeneID	9265;
Concentration	0.5mg/ml
Formulation	Rabbit IgG in pH7.4 PBS, 0.05% NaN <sub>3</sub> , 40% Glycerol.
Storage	Store at -20C

## Application Details

Immunofluorescence:1: 25-100

## Images



The image is immunohistochemistry of paraffin-embedded Human liver cancer tissue using 47012(CYTH3 Antibody) at dilution 1/30. (Original magnification: ?00)

## Background

This gene encodes a member of the PSCD (pleckstrin homology, Sec7 and coiled-coil domains) family. PSCD family members have identical structural organization that consists of an N-terminal coiled-coil motif, a central Sec7 domain, and a C-terminal pleckstrin homology (PH) domain. The coiled-coil motif is involved in homodimerization, the Sec7 domain contains guanine-nucleotide exchange protein (GEP) activity, and the PH domain interacts with phospholipids and is responsible for association of PSCDs with membranes. Members of this family appear to mediate the regulation of

protein sorting and membrane trafficking. This encoded protein is involved in the control of Golgi structure and function, and it may have a physiological role in regulating ADP-ribosylation factor protein 6 (ARF) functions, in addition to acting on ARF1.?

---

Note: This product is for in vitro research use only