

DBT Antibody

Catalog No: #47021

Orders: order@signalwayantibody.comSupport: tech@signalwayantibody.com

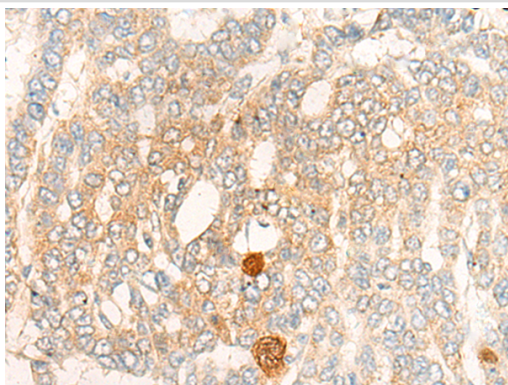
Description

Product Name	DBT Antibody
Host Species	Rabbit
Clonality	Polyclonal
Purification	Antigen affinity purification
Applications	WB, IHC
Species Reactivity	Hu
Specificity	The antibody detects endogenous levels of total DBT protein.
Immunogen Type	peptide
Immunogen Description	Synthetic peptide of human DBT
Target Name	DBT
Other Names	E2; E2B; BCATE2; BCKADE2; BCKAD-E2; BCOADC-E2
Accession No.	Swiss-Prot#:P11182 NCBI Gene ID:1629Gene Accssion:NP_001909
Uniprot	P11182
GeneID	1629;
Calculated MW	53 kDa
Concentration	0.7mg/ml
Formulation	Rabbit IgG in pH7.4 PBS, 0.05% NaN ₃ , 40% Glycerol.
Storage	Store at -20C

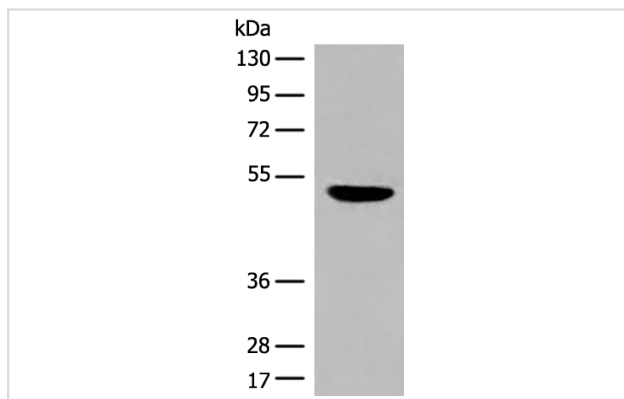
Application Details

Western blotting:1:200-1000Immunofluorescence:1: 20-100

Images



The image is immunohistochemistry of paraffin-embedded Human liver cancer tissue using 47021(DBT Antibody) at dilution 1/20. (Original magnification: ?00)



Gel: 8%SDS-PAGE
Lysate: 40 µg, Lane: Mouse liver tissue lysate
Primary antibody: DBT Antibody at dilution 1/250
Secondary antibody: Goat anti rabbit IgG at 1/8000 dilution
Exposure time: 30 seconds

Background

The branched-chain alpha-keto acid dehydrogenase complex (BCKD) is an inner-mitochondrial enzyme complex involved in the breakdown of the branched-chain amino acids isoleucine, leucine, and valine. The BCKD complex is thought to be composed of a core of 24 transacylase (E2) subunits, and associated decarboxylase (E1), dehydrogenase (E3), and regulatory subunits. This gene encodes the transacylase (E2) subunit. Mutations in this gene result in maple syrup urine disease, type 2. Alternatively spliced transcript variants have been described, but their biological validity has not been determined.

Note: This product is for in vitro research use only